

TOSHIBA



SMMS-u, SHRM-e,
MiNi SMMS-e Systems

PRICE PAGES

March 2022

10

OUTDOOR UNITS

2-PIPE HEAT PUMP 13

OUTDOOR UNITS (BASIC &
COMBINATIONS) 14

2-PIPE HEAT PUMP STAND ALONE 15

3-PIPE HEAT PUMP 16

OUTDOOR UNITS (BASIC &
COMBINATIONS) 17

2-PIPE HEAT PUMP (Mini VRF) 18



20

INDOOR UNITS

4-WAY COMPACT CASSETTE 23

4-WAY CASSETTE 23

4-WAY SMART CASSETTE 24

1-WAY CASSETTE 24-25

2-WAY CASSETTE 25

HIGH WALL 26

SLIM DUCT TYPE 26-27

CONCEALED MEDIUM STATIC
DUCT TYPE 27

HIGH STATIC DUCT TYPE 28

CONSOLE TYPE 28

CEILING TYPE 29

FLOOR STANDING
CONCEALED TYPE 29

FLOOR CONSOLE TYPE 30

FLOOR STANDING TYPE 30

FRESH AIR INTAKE TYPE 31

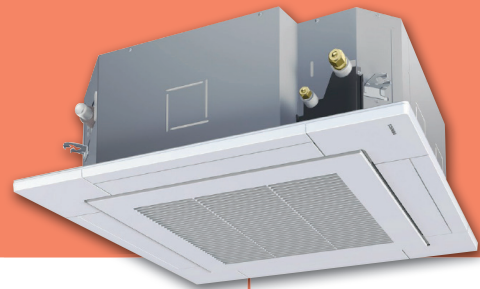
AIR TO AIR HEAT EXCHANGER
WITH DX-COIL 31

HOT WATER MODULE 32

AIR TO AIR HEAT EXCHANGER 33

AHU DX-COIL INTERFACE
0-10V BMS CONTROL 33

AHU DX-COIL INTERFACE 34

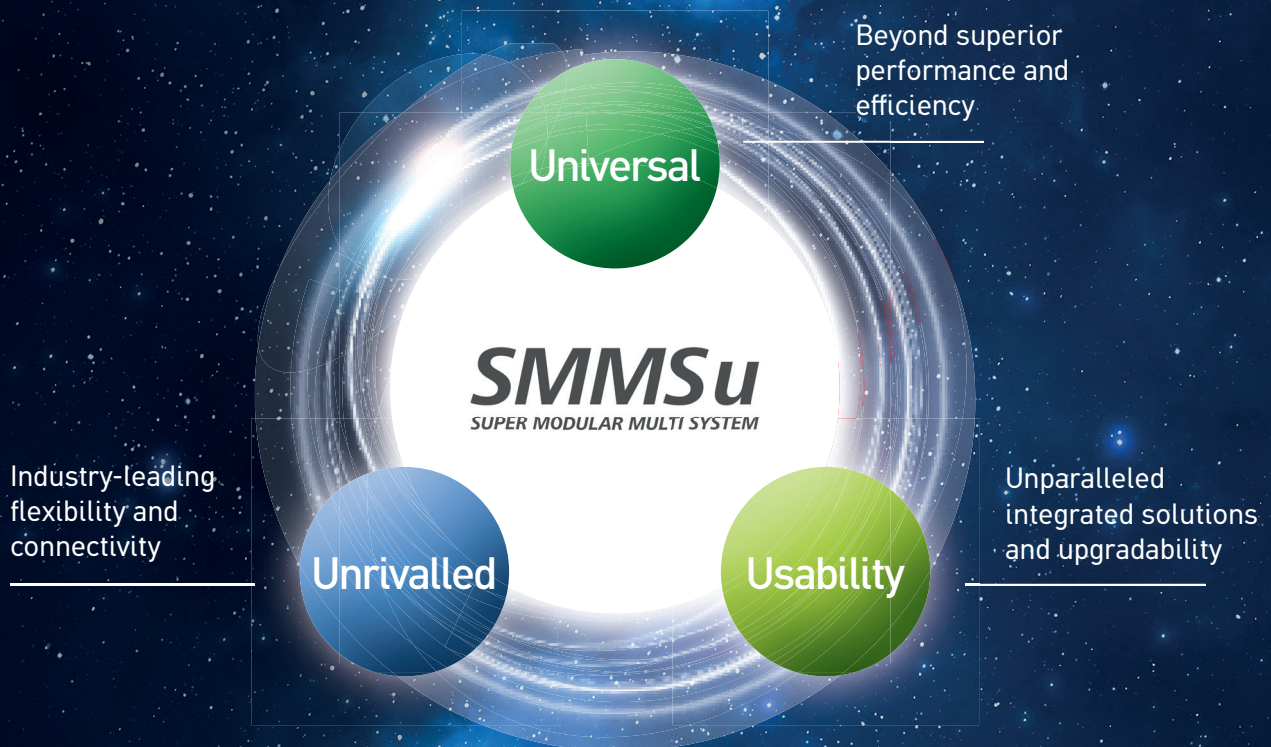


THE ULTIMATE VRF SYSTEM

VRF technology is the perfect solution for large commercial and industrial buildings such as offices, hotels, hospitals, leisure, and shops. The variable refrigerant flow technology combined with inverter compressor guarantees high efficiency levels, operational flexibility with limited maintenance requirements. Moreover, the diversity of solutions makes VRF system the most flexible choice to satisfy all requirements.

EXPERIENCE THE FUTURE

The expectations of a modern air conditioning system have evolved over the past years. Today, advanced comfort goes hand in hand with reduced energy and maintenance costs, combined with maximized simplicity and true operational flexibility. SMMS-u associates all of Toshiba innovative spirit and outstanding expertise to create highly efficient solution with maximum end user comfort at its core.



Benefits for consultants

SMMS-u offers unlimited possibilities in terms of capacity, connectivity, indoor unit lineup and control solutions, providing the correct solution for your customers needs. Toshiba's intuitive selection tool will guide you through the selection process with minimal input from your side, ensuring trouble-free installation and operation. All SMMS-u systems come with the Eurovent certification as standard.



Benefits for users

There is nothing like a comfortable place to enjoy the present moment. Full of Toshiba innovations, the new SMMS-u guarantees all year round comfort combined with superior energy management, advanced air filtration and full control solutions for maximized product usability.









Benefits for installers

Designed to perform and engineered to perfection, SMMS-u excels in managing the heating, cooling, hot water and fresh air input into offices, shops, restaurants and domestic housing, with unrivalled connection flexibility. You can rely on Toshiba support, to assist you from the project phase to commissioning and troubleshooting.

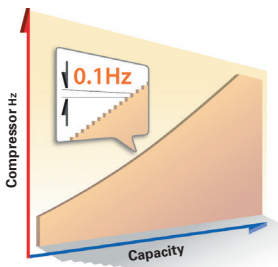
UNIQUE ON THE MARKET: TRIPLE ROTARY COMPRESSOR

The exclusive Toshiba triple rotary compressor brings outstanding performances to the SMMS-u with no compromise on system reliability.



-  Large capacity
-  Wide operating range
-  Less refrigerant needed
-  Low vibration
-  Low noise
-  DLC treatment

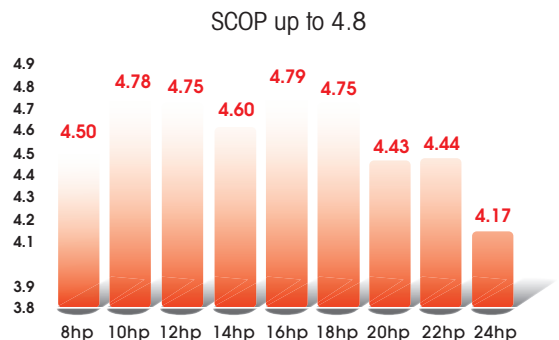
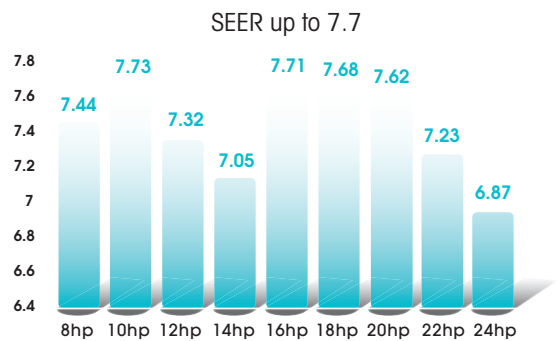
INFINITE VARIABLE CONTROL



This feature has been continually evolved and developed, since its inception by Toshiba engineers back in 2004 with the original SMMS system. The control has the ability to adjust the compressor rotational speed in a near seamless 0.1 Hz steps. This control when matched with Toshiba's newest and latest Twin Rotary compressors, allows the system to respond precisely to the capacity needs of the end user, whilst minimizing energy losses.

TOP CLASS EFFICIENCY

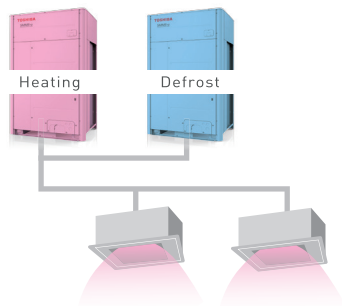
Utilizing the new highly efficient core technologies results in greater energy efficiency and performances.



SUPERIOR AIR COMFORT

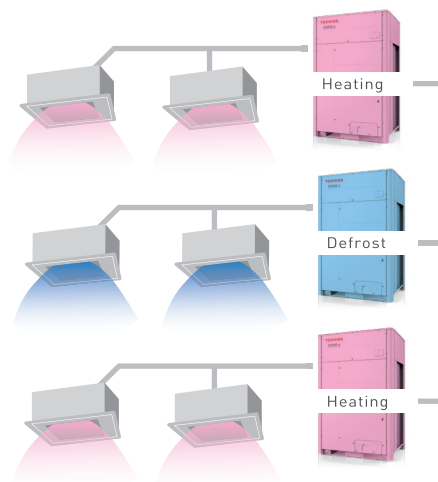
INTELLIGENT DEFROST

Individual defrost: continuous heating up to 5 hours



Kobetsu

No simultaneous defrost in combination configuration. Heating operation never stopped.



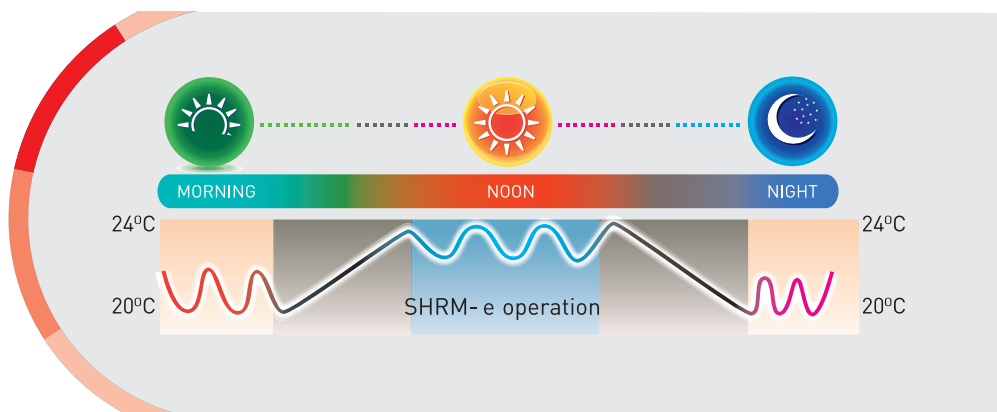
Renkey

No simultaneous defrost with multi system configuration. Heating operation never stopped.

* Applicable on SMMS-u only

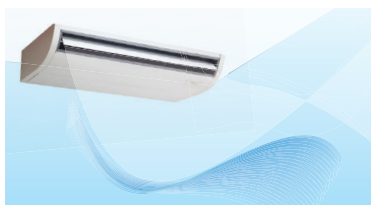
DUAL SET POINT FOR MORE PRECISION

The Dual Set Point increases the system's energy efficiency and reduces overall running costs, with longer periods of time in thermal off mode. Heating and cooling temperatures at which the indoor unit will begin to operate can now be individually selected giving maximum flexibility to the user.

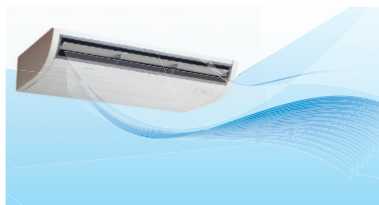


COOL COMFORT WITH SOFT COOLING MODE

The development of the soft cooling mode provides a new level for cool comfort. You will have the freedom to personalize the air flow intensity, angle and direction directly from the remote control and enjoy the indoor environment at the right temperature without being directly exposed to the cold draft.



Standard operating mode



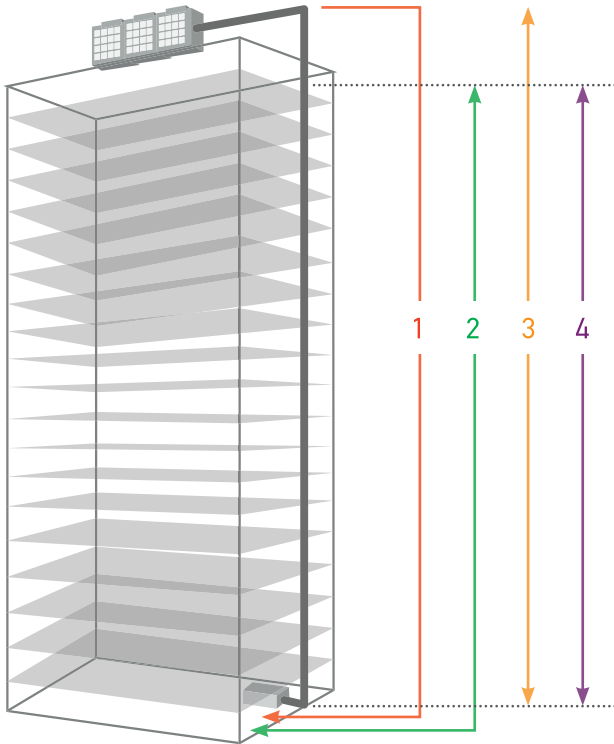
Soft cooling mode



FLEXIBLE DESIGN AND QUICK INSTALLATION

PIPING DESIGN FLEXIBILITY

Toshiba's piping technology makes them one of the industries leaders in system flexibility and ease of installation and with the e-series VRF system, the level of flexibility has increased further, giving more options to the contractor and installer alike.



1. Total piping length

Applied with Toshiba's unique and greatly improved technology, Toshiba's VRF can reach up to 1,200 meters maximum piping length.



Total piping length **1,200 m²**

2. Farthest equivalent length

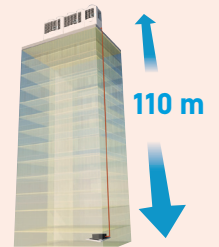
Applied with Toshiba's unique and greatly improved technology, Toshiba's VRF can reach up to 1,200 meters maximum piping length.



Farthest equivalent length **250 m**

3. Height between outdoor unit and indoor unit

Another industry best-in-class feature is the maximum vertical distance between the outdoor and indoor units which can extend up to 110 meters. Toshiba's VRF enhanced piping capabilities results in more benefits for system design and installation flexibility, as well as lower installation costs.



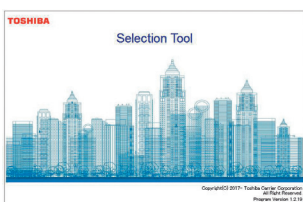
4. Height difference FCU-FCU

Maximum vertical distance between indoor units, which reaches up to 40 meters, equal to an entire 11-store building.

Height difference between outdoor unit and indoor unit **40 m**

TOSHIBA SELECTION TOOL

Designed for novice and expert users, Toshiba selection software creates simple, yet detailed VRF system schematics. It is highly versatile, allowing the level of detail to be tailored to suit customer requirements. Final detailed reports can be produced and sent to customers in PDF format or in more complex files, such as AutoCAD DXF, allowing simple integration into existing software packages.



EASY COMMISSIONING AND MAINTENANCE

Save time during commissioning and maintenance. Choose between the "Wave Tool Advance" using Smartphone NFC connection or the link adaptor connected to the outdoor or indoor unit.



Wireless connection using smartphone* NFC technology to collect system data

Get access to system data indoor using link adaptor

Direct USB connection to get access to system data

System operation self record using link adaptor

* Please contact Toshiba for Android® phone compatibility list.



OUTDOOR UNITS

TOSHIBA

CHOOSE YOUR ADAPTED SYSTEM SOLUTION

OUTDOOR UNITS

RESIDENTIAL



LIGHT COMMERCIAL



BUSINESS



	RESIDENTIAL	LIGHT COMMERCIAL	BUSINESS	
Reversible cooling or heating	 MiNi SMMS Sideblow 1fan	Individual housing mainly	Up to 250 m ² per system Max. 10 IDUs per system	Up to 250 m ² per system and max. 10 IDUs per system 1 phase electrical power supply only
	 MiNi SMMS-e 1Ph & 3Ph	Individual housing mainly	Up to 400 m ² per system Max. 16 IDUs per system	
Simultaneous cooling & heating	 Stand alone SMMS-e & SMMS-u	Collective housing mainly	3-phase electrical power supply only	Up to 6,000 m ² per system Max. 128 IDUs per system
	 SHRM-e	Collective housing mainly	3-phase electrical power supply only	Up to 2,500 m ² per system Max. 64 IDUs per system Hot water production capability

2-Pipe Heat Pump

SMMSu
SUPER MODULAR MULTI SYSTEM



MODEL NAME Heat Pump	MMY	MUP0801HT8P-E	MUP1001HT8P-E	MUP1201HT8P-E	MUP1401HT8P-E
Capacity Code	HP	8	10	12	14
Cooling capacity	kW	22,4	28,0	33,5	40,0
EER / SEER / η_{sc} (%)		3,97 / 7,44 / 294,6	3,35 / 7,73 / 306,2	3,24 / 7,32 / 289,8	2,75 / 7,05 / 279,0
Heating capacity (rated)	kW	22,4	28,0	33,5	40,0
Heating capacity (maximum)	kW	25,0	31,5	37,5	45,0
COP / SCOP / η_{sh} (%)		4,24 / 4,50 / 177,0	3,89 / 4,78 / 188,2	4,31 / 4,75 / 187,0	4,00 / 4,60 / 181,0
Outdoor unit dimensions (HxWxD)	mm	1.690 x 990 x 780	1.690 x 990 x 780	1.690 x 990 x 780	1.690 x 990 x 780
Outdoor unit weight	Kg	228	228	228	228
Pipe Connection (Gas-Liquid)		3/4" - 1/2"	7/8" - 1/2"	1 1/8" - 1/2"	1 1/8" - 5/8"
Refrigerant Base Charge	Kg	6	6	6	6
Power Supply	V/Ph/Hz	380 - 415 V / 3phase / 50Hz			
Manufacturer / Origin		JAPAN / THAILAND			

PRICE LIST

Without recycling fees & VAT	€	8.500	9.300	9.720	12.060
Recycling Fees (without VAT)	€	22,8	22,8	22,8	22,8

MODEL NAME Heat Pump	MMY	MUP1601HT8P-E	MUP1801HT8P-E	MUP2001HT8P-E	MUP2201HT8P-E	MUP2401HT8P-E
Capacity Code	HP	16	18	20	22	24
Cooling capacity	kW	45,0	50,4	56,0	61,5	67,0
EER / SEER / η_{sc} (%)		3,20 / 7,71 / 305,4	3,17 / 7,68 / 304,2	3,11 / 7,62 / 301,8	3,01 / 7,23 / 286,2	2,77 / 6,87 / 271,8
Heating capacity (rated)	kW	45,0	50,4	56,0	61,5	67,0
Heating capacity (maximum)	kW	50,0	56,0	63,0	69,0	70,0
COP / SCOP / η_{sh} (%)		3,77 / 4,79 / 188,6	4,02 / 4,75 / 187,0	3,75 / 4,43 / 174,2	3,80 / 4,44 / 174,5	3,53 / 4,17 / 163,8
Outdoor unit dimensions (HxWxD)	mm	1.690 x 1.290 x 780	1.690 x 1.290 x 780	1.690 x 1.290 x 780	1.690 x 1.290 x 780	1.690 x 1.290 x 780
Outdoor unit weight	Kg	312	312	334	356	356
Pipe Connection (Gas-Liquid)		1 1/8" - 5/8"	1 1/8" - 5/8"	1 1/8" - 5/8"	1 1/8" - 3/4"	1 3/8" - 3/4"
Refrigerant Base Charge	Kg	9	9	9	9	9
Power Supply	V/Ph/Hz	380 - 415 V / 3phase / 50Hz				
Manufacturer / Origin		JAPAN / THAILAND				

PRICE LIST

Without recycling fees & VAT	€	13.420	14,660	15.700	16.700	18.400
Recycling Fees (without VAT)	€	31,2	31,2	33,4	35,6	35,6



Rated conditions - Cooling: Indoor Air Temp 27°C DB / 19°C WB, Outdoor 35°C DB.
Heating: Indoor Air Temp 20°C DB, Outdoor 7°C DB / 6°C WB.

Outdoor units (Basic & Combinations)

System HP	Capacity rank (HP)	Cooling Capacity (kW)	Heating Capacity		Combined outdoor units (MMY-)					No of connectable indoor units
			Rated (kW)	Max.(kW)	UNIT 1	UNIT 2	UNIT 3	UNIT 4	UNIT 5	
MMY-MUP0801HT8P-E	8	22,4	22,4	25,0	8	-	-	-	-	18
MMY-MUP1001HT8P-E	10	28,0	28,0	31,5	10	-	-	-	-	22
MMY-MUP1201HT8P-E	12	33,5	33,5	37,5	12	-	-	-	-	27
MMY-MUP1401HT8P-E	14	40,0	40,0	45,0	14	-	-	-	-	31
MMY-MUP1601HT8P-E	16	45,0	45,0	50,0	16	-	-	-	-	36
MMY-MUP1801HT8P-E	18	50,4	50,4	56,0	18	-	-	-	-	40
MMY-MUP2001HT8P-E	20	56,0	56,0	63,0	20	-	-	-	-	45
MMY-MUP2201HT8P-E	22	61,5	61,5	69,0	22	-	-	-	-	49
MMY-MUP2401HT8P-E	24	67,0	67,0	70,0	24	-	-	-	-	54
MMY-MUP2611HT8P-E	26	73,5	73,5	82,5	14	12	-	-	-	58
MMY-MUP2811HT8P-E	28	80,0	80,0	90,0	14	14	-	-	-	63
MMY-MUP3011HT8P-E	30	83,9	83,9	93,5	18	12	-	-	-	64
MMY-MUP3211HT8P-E	32	89,5	89,5	100,5	20	12	-	-	-	65
MMY-MUP3411HT8P-E	34	96,0	96,0	108,0	20	14	-	-	-	66
MMY-MUP3611HT8P-E	36	100,5	100,5	107,5	24	12	-	-	-	67
MMY-MUP3811HT8P-E	38	107,0	107,0	115,0	24	14	-	-	-	68
MMY-MUP4011HT8P-E	40	112,0	112,0	126,0	20	20	-	-	-	69
MMY-MUP4211HT8P-E	42	117,4	117,4	126,0	24	18	-	-	-	70
MMY-MUP4411HT8P-E	44	123,0	123,0	133,0	24	20	-	-	-	71
MMY-MUP4611HT8P-E	46	128,5	128,5	139,0	24	22	-	-	-	72
MMY-MUP4811HT8P-E	48	134,0	134,0	140,0	24	24	-	-	-	73
MMY-MUP5011HT8P-E	50	140,5	140,5	152,5	24	24	12	-	-	74
MMY-MUP5211HT8P-E	52	147,0	147,0	160,0	24	14	14	-	-	75
MMY-MUP5411HT8P-E	54	152,0	152,0	171,0	20	20	14	-	-	76
MMY-MUP5611HT8P-E	56	156,5	156,5	170,5	24	20	12	-	-	77
MMY-MUP5811HT8P-E	58	163,0	163,0	178,0	24	20	14	-	-	78
MMY-MUP6011HT8P-E	60	167,5	167,5	177,5	24	24	12	-	-	79
MMY-MUP6211HT8P-E	62	174,0	174,0	185,0	24	24	14	-	-	80
MMY-MUP6411HT8P-E	64	179,0	179,0	196,0	24	20	20	-	-	81
MMY-MUP6611HT8P-E	66	184,5	184,5	202,0	24	22	20	-	-	82
MMY-MUP6811HT8P-E	68	190,0	190,0	203,0	24	24	20	-	-	83
MMY-MUP7011HT8P-E	70	195,5	195,5	209,0	24	24	22	-	-	84
MMY-MUP7211HT8P-E	72	201,0	201,0	210,0	24	24	24	-	-	85
MMY-MUP7411HT8P-E	74	207,5	207,5	222,5	24	24	14	12	-	86
MMY-MUP7611HT8P-E	76	214,0	214,0	230,0	24	24	14	14	-	87
MMY-MUP7811HT8P-E	78	219,0	219,0	241,0	24	20	20	14	-	88
MMY-MUP8011HT8P-E	80	223,5	223,5	240,5	24	24	20	12	-	90
MMY-MUP8211HT8P-E	82	230,0	230,0	248,0	24	24	20	14	-	92
MMY-MUP8411HT8P-E	84	234,5	234,5	247,5	24	24	24	12	-	94
MMY-MUP8611HT8P-E	86	241,0	241,0	255,0	24	24	24	14	-	96
MMY-MUP8811HT8P-E	88	246,0	246,0	266,0	24	24	20	20	-	98
MMY-MUP9011HT8P-E	90	251,5	251,5	272,0	24	24	22	20	-	100
MMY-MUP9211HT8P-E	92	257,0	257,0	273,0	24	24	24	20	-	102
MMY-MUP9411HT8P-E	94	262,5	262,5	279,0	24	24	24	22	-	104
MMY-MUP9611HT8P-E	96	268,0	268,0	280,0	24	24	24	24	-	106
MMY-MUP9811HT8P-E	98	274,5	274,5	292,5	24	24	24	14	12	108
MMY-MUP10011HT8P-E	100	281,0	281,0	300,0	24	24	24	14	14	110
MMY-MUP10211HT8P-E	102	286,0	286,0	311,0	24	24	20	20	14	112
MMY-MUP10411HT8P-E	104	290,5	290,5	310,5	24	24	24	20	12	114
MMY-MUP10611HT8P-E	106	297,0	297,0	318,0	24	24	24	20	14	116
MMY-MUP10811HT8P-E	108	301,5	301,5	317,5	24	24	24	24	12	118
MMY-MUP11011HT8P-E	110	308,0	308,0	325,0	24	24	24	24	14	120
MMY-MUP11211HT8P-E	112	313,0	313,0	336,0	24	24	24	20	20	122
MMY-MUP11411HT8P-E	114	318,5	318,5	342,0	24	24	24	22	20	124
MMY-MUP11611HT8P-E	116	324,0	324,0	343,0	24	24	24	24	20	126
MMY-MUP11811HT8P-E	118	329,5	329,5	349,0	24	24	24	24	22	128
MMY-MUP12011HT8P-E	120	335,0	335,0	350,0	24	24	24	24	24	128

* Free combination of Outdoor Units without any restriction.

2-Pipe Heat Pump Stand Alone



MODEL NAME Heat Pump	MMY	SAP0806HT8P-E	SAP1006HT8P-E	SAP1206HT8P-E
Capacity Code	HP	8	10	12
Cooling capacity	kW	22,4	28,0	33,5
EER / SEER / η_{sc} (%)		4,04 / 6,32 / 249,8	3,54 / 6,18 / 244,2	3,25 / 6,10 / 241,0
Heating capacity	kW	25,0	31,5	37,5
COP / SCOP / η_{sh} (%)		4,42 / 3,79 / 148,6	4,15 / 3,81 / 149,4	3,84 / 3,68 / 144,2
Outdoor unit dimensions (HxWxD)	mm	1.830 x 990 x 780	1.830 x 990 x 780	1.830 x 990 x 780
Outdoor unit weight	Kg	227	227	227
Pipe Connection (Gas -Liquid)		3/4" - 1/2"	7/8" - 1/2"	1 1/8" - 1/2"
Refrigerant Base Charge	Kg	5,7	5,7	5,7
Power Supply	V/Ph/Hz	380 – 415 V / 3phase / 50Hz		
Manufacturer / Origin		JAPAN / THAILAND		
PRICE LIST				
Without recycling fees & VAT	€	8.050	8.450	8.850
Recycling Fees (without VAT)	€	22,7	22,7	22,7



Rated conditions - Cooling: Indoor Air Temp 27°C DB / 19°C WB, Outdoor 35°C DB.
Heating: Indoor Air Temp 20°C DB, Outdoor 7°C DB / 6°C WB.

3-Pipe Heat Pump



MODEL NAME Heat Pump	MMY	MAP0806FT8P-E	MAP1006FT8P-E	MAP1206FT8P-E	MUP1406HT8P-E
Capacity Code	HP	8	10	12	14
Cooling capacity	kW	22,4	28,0	33,5	40,0
EER / SEER / η_{sc} (%)		3,76 / 6,07 / 239,8	3,51 / 6,03 / 238,2	3,43 / 5,94 / 234,6	3,14 / 5,61 / 221,4
Heating capacity (rated)	kW	22,4	28,0	33,5	40,0
Heating capacity (maximum)	kW	25,0	31,5	37,5	45,0
COP / SCOP / η_{sh} (%)		4,14 / 3,64 / 142,6	3,97 / 3,53 / 138,2	3,85 / 3,71 / 145,4	3,80 / 3,57 / 139,8
Outdoor unit dimensions (HxWxD)	mm	1.830 x 990 x 780	1.830 x 990 x 780	1.830 x 1.210 x 780	1.830 x 1.210 x 780
Outdoor unit weight	Kg	263	263	316	316
Pipe Connection (Suction-Discharge-Liquid)		7/8" - 3/4" - 1/2"	7/8" - 3/4" - 1/2"	1 1/8" - 3/4" - 1/2"	1 1/8" - 7/8" - 5/8"
Refrigerant Base Charge	Kg	11	11	11	11
Power Supply	V/Ph/Hz	380 - 415 V / 3phase / 50Hz			
Manufacturer / Origin		JAPAN / THAILAND			

PRICE LIST

Without recycling fees & VAT	€	9.700	9.900	12.500	13.100
Recycling Fees (without VAT)	€	26,3	26,3	31,6	31,6

MODEL NAME Heat Pump	MMY	MAP1606FT8P-E	MAP1806FT8P-E	MAP2006FT8P-E
Capacity Code	HP	16	18	20
Cooling capacity	kW	45,0	50,4	56,0
EER / SEER / η_{sc} (%)		3,23 / 5,72 / 225,8	3,15 / 5,89 / 232,6	3,01 / 5,64 / 222,6
Heating capacity (rated)	kW	45,0	50,4	56,0
Heating capacity (maximum)	kW	50,0	56,5	58,0
COP / SCOP / η_{sh} (%)		3,68 / 3,50 / 137,0	3,67 / 3,59 / 140,6	3,52 / 3,59 / 140,6
Outdoor unit dimensions (HxWxD)	mm	1.830 x 1.600 x 780	1.830 x 1.600 x 780	1.830 x 1.600 x 780
Outdoor unit weight	Kg	377	377	377
Pipe Connection (Suction-Discharge -Liquid)		1 1/8" - 7/8" - 3/4"	1 1/8" - 7/8" - 3/4"	1 1/8" - 7/8" - 3/4"
Refrigerant Base Charge	Kg	11	11	11
Power Supply	V/Ph/Hz	380 - 415 V / 3phase / 50Hz		
Manufacturer / Origin		JAPAN / THAILAND		

PRICE LIST

Without recycling fees & VAT	€	14.400	15.400	16.500
Recycling Fees (without VAT)	€	37,7	37,7	37,7



Rated conditions - Cooling: Indoor Air Temp 27°C DB / 19°C WB, Outdoor 35°C DB.
Heating: Indoor Air Temp 20°C DB, Outdoor 7°C DB / 6°C WB.

Outdoor units (Basic & Combinations)

System HP	Capacity rank (HP)	Cooling Capacity (kW)	Heating Capacity		Combined outdoor units (MMY-)			No of connectable indoor units
			Nominal (kW)	Max.(kW)	UNIT 1	UNIT 2	UNIT 3	
MMY-MAP0806FT8P-E	8	22,4	22,4	25,0	8	-	-	18
MMY-MAP1006FT8P-E	10	28,0	28,0	31,5	10	-	-	22
MMY-MAP1206FT8P-E	12	33,5	33,5	37,5	12	-	-	27
MMY-MAP1406FT8P-E	14	40,0	40,0	45,0	14	-	-	31
MMY-MAP1606FT8P-E	16	45,0	45,0	50,0	16	-	-	36
MMY-MAP1806FT8P-E	18	50,4	50,4	56,5	18	-	-	40
MMY-MAP2006FT8P-E	20	56,0	56,0	58,0	20	-	-	41
MMY-AP2216FT8P-E	22	61,5	61,5	69,0	12	10	-	49
MMY-AP2416FT8P-E	24	68,0	68,0	76,5	14	10	-	54
MMY-AP2616FT8P-E	26	73,5	73,5	82,5	14	12	-	58
MMY-AP2816FT8P-E	28	80,0	80,0	90,0	14	14	-	63
MMY-AP3016FT8P-E	30	85,0	85,0	95,0	16	14	-	64
MMY-AP3216FT8P-E	32	90,4	90,4	101,5	18	14	-	64
MMY-AP3416FT8P-E	34	95,4	95,4	106,5	18	16	-	64
MMY-AP3616FT8P-E	36	100,8	100,8	113,0	18	18	-	64
MMY-AP3816FT8P-E	38	106,4	106,4	114,5	20	18	-	64
MMY-AP4016FT8P-E	40	112,0	112,0	116,0	20	20	-	64
MMY-AP4216FT8P-E	42	120,0	120,0	135,0	14	14	14	64
MMY-AP4416FT8P-E	44	125,0	125,0	135,0	16	14	14	64
MMY-AP4616FT8P-E	46	130,4	130,4	146,5	18	14	14	64
MMY-AP4816FT8P-E	48	135,4	135,4	151,5	18	16	14	64
MMY-AP5016FT8P-E	50	140,8	140,8	158,0	18	18	14	64
MMY-AP5216FT8P-E	52	145,8	145,8	163,0	18	18	16	64
MMY-AP5416FT8P-E	54	151,2	151,2	169,5	18	18	18	64

2-Pipe Heat Pump

MINI-SMMS 



MODEL NAME Heat Pump	MCY	MHP0406HT-E	MHP0506HT-E1	MHP0404HS-E	MHP0504HS-E	MHP0604HS-E
Capacity Code	HP	4	5	4	5	6
Cooling capacity	kW	12,1	14,0	12,1	14,0	15,5
EER / SEER / η_{sc} (%)		3,73 / 8,08 / 320,2	3,23 / 7,77 / 307,8	4,28 / 9,42 / 373,8	4,00 / 9,23 / 366,2	3,61 / 9,68 / 384,2
Heating capacity	kW	12,5	16,0	12,5	16,0	18,0
COP / SCOP / η_{sh} (%)	kW	4,42 / 3,83 / 150,2	4,00 / 3,88 / 152,2	4,83 / 4,17 / 163,8	4,27 / 4,24 / 166,6	4,18 / 4,37 / 171,8
Outdoor unit dimensions (HxWxD)		910 x 990 x 390	910 x 990 x 390	1.235 x 990 x 390	1.235 x 990 x 390	1.235 x 990 x 390
Outdoor unit weight		100	100	127	127	127
Pipe Connection (Gas-Liquid)	mm	5/8" - 3/8"	5/8" - 3/8"	5/8" - 3/8"	5/8" - 3/8"	3/4" - 3/8"
Refrigerant Base Charge	Kg	3,3	3,3	6,4	6,4	6,4
Power Supply	V/Ph/Hz	220 - 240 V / 1phase / 50Hz				
Manufacturer / Origin		JAPAN / CHINA				

PRICE LIST

Without recycling fees & VAT	€	4.680	5.000	6.200	6.450	6.940
Recycling Fees (without VAT)	€	10,0	10,0	12,7	12,7	12,7

MODEL NAME Heat Pump	MMY	MHP0404HS8-E	MHP0504HS8-E	MHP0604HS8-E	MHP0806HS8-E	MHP1006HS8-E
Capacity Code	HP	4	5	6	8	10
Cooling capacity	kW	12,1	14,0	15,5	22,4	28,0
EER / SEER / η_{sc} (%)		4,29 / 9,47 / 375,8	4,03 / 9,29 / 368,6	3,65 / 9,74 / 386,6	3,36 / 8,09 / 320,6	3,00 / 7,40 / 293,0
Heating capacity	kW	12,5	16,0	18,0	22,4	28,0
COP / SCOP / η_{sh} (%)		4,86 / 4,19 / 164,6	4,30 / 4,25 / 167,0	4,22 / 4,38 / 172,2	4,31 / 4,50 / 177,0	4,00 / 4,57 / 179,8
Outdoor unit dimensions (HxWxD)	mm	1.235 x 990 x 390	1.235 x 990 x 390	1.235 x 990 x 390	1.740 x 990 x 390	1.740 x 990 x 390
Outdoor unit weight	Kg	125	125	125	147	147
Pipe Connection (Gas-Liquid)		5/8" - 3/8"	5/8" - 3/8"	3/4" - 3/8"	3/4" - 3/8"	7/8" - 3/8"
Refrigerant Base Charge	Kg	6,4	6,4	6,4	4,4	4,4
Power Supply	V/Ph/Hz	380 - 415 V / 3phase / 50Hz				
Manufacturer / Origin		JAPAN / CHINA				

PRICE LIST

Without recycling fees & VAT	€	6.700	7.050	7.150	7.260	7.700
Recycling Fees (without VAT)	€	12,5	12,5	12,5	14,7	14,7



Rated conditions - Cooling: Indoor Air Temp 27°C DB / 19°C WB, Outdoor 35°C DB.
Heating: Indoor Air Temp 20°C DB, Outdoor 7°C DB / 6°C WB.

INDOOR UNITS

TOSHIBA



Indoor units, hot water & fresh air solutions

Basic specifications

Model type	Class	003	005	007	009	012	015	018	024	027	039	036	048	056	072	096	112	128	
		Cooling/Heating capacity in kW																	
		Cooling/Heating capacity in HP																	
Compact 4-way discharge cassette	MMU-UP***1MH-E		●	●	●	●	●	●											
Smart 4-way discharge cassette	MMU-UP***H-E				●	●	●	●	●	●	●	●	●	●					
4-way discharge cassette	MMU-UP***1HP-E				●	●	●	●	●	●	●	●	●	●					
2-way discharge cassette	MMU-UP***1WH-E			●	●	●	●	●	●	●	●	●	●	●					
1-way discharge cassette	MMU-UP**1YP/1SH-E	●	●	●	●	●	●	●	●										
Slim duct	MMD-UP***1SPHY-E	●	●	●	●	●	●	●											
Concealed duct	MMD-UP***1BHP-E		●	●	●	●	●	●	●	●	●	●	●	●					
Concealed duct high static	MMD-UP***1BHP-E							●	●	●		●	●		●	●			
Ceiling suspended	MMC-UP***1HP-E						●	●	●	●		●	●						
Floor-standing concealed	MML-UP***1BH-E			●	●	●	●	●	●										
Floor-standing cabinet	MML-UP***1H-E			●	●	●	●	●	●										
Bi-flow console	MML-UP***1NH-E			●	●	●	●	●											
Floor standing	MMF-UP***1H-E						●	●	●	●		●	●	●					
High wall (With & without PMV)	MMK-UP***1HP-E MMK-UP***1HPL-E	●	●	●	●	●	●	●	●										
Mid temperature Hot Water module	MMW-UP**1LQ-E									●				●					
High temperature Hot Water module	MMW-AP**1CHQ-E												●						
EMEA AHU DX Kit (std version)	MM-DXC010 + MM-DXV***							●	●	●		●	●		●	●			
EMEA AHU DX Kit (0/10v version)	RBC-DXC031 + MM-DXV***													●	●	●			
Fresh air intake indoor unit	MMD-UP***1HFP-E												●		●	●	●	●	

Air to Air heat exchanger

Basic specifications

Model type	Cooling/Heating capacity in kW	Air flow in m³/h	0.6	0.8	1	1.25	1.7	2	2.5	3	3.2	4	5	6	8	10		
			150 m³/h	250 m³/h	350 m³/h	500 m³/h	650 m³/h	800 m³/h						1000 m³/h	1500 m³/h	2000 m³/h		
Air-to-air heat exchanger	VN-M**0HE			●	●	●	●	●	●					●	●	●	●	●
A2A heat exchanger + DXcoil or + DXcoil & Humidifier	MMD-VN***2HEX1E MMD-VNK***2HEX1E						●		●					●				

● Heat pump

* Only compatible with SMMS-u

4-way Compact Cassette



MODEL NAME IDU	MMU	UP0051MH-E	UP0071MH-E	UP0091MH-E	UP0121MH-E	UP0151MH-E	UP0181MH-E
Capacity Code	HP	0,6	0,8	1,0	1,25	1,7	2,0
Cooling capacity	kW	1,7	2,2	2,8	3,6	4,5	5,6
Heating capacity	kW	1,9	2,5	3,2	4,0	5,0	6,3
Air Flow	m³/h	430 - 400 - 365	552 - 462 - 378	570 - 466 - 378	594 - 504 - 402	660 - 552 - 468	840 - 642 - 522
Indoor unit dimensions (HxWxD)	mm	256 x 575 x 575	256 x 575 x 575	256 x 575 x 575	256 x 575 x 575	256 x 575 x 575	256 x 575 x 575
Panel RBC-UM21PG(W)-E dimensions (HxWxD)	mm	12 x 620 x 620	12 x 620 x 620	12 x 620 x 620	12 x 620 x 620	12 x 620 x 620	12 x 620 x 620
Indoor unit / panel weight	Kg	15 / 2,5	15 / 2,5	15 / 2,5	15 / 2,5	15 / 2,5	15 / 2,5
Pipe Connection (Gas-Liquid)		3/8" - 1/4"	3/8" - 1/4"	3/8" - 1/4"	3/8" - 1/4"	1/2" - 1/4"	1/2" - 1/4"
PRICE LIST							
Without recycling fees & VAT	€	1.210 (1.000+210)	1.220 (1.010+210)	1.240 (1.030+210)	1.270 (1.060+210)	1.390 (1.180+210)	1.410 (1.200+210)
Recycling Fees (without VAT)	€	1,75	1,75	1,75	1,75	1,75	1,75

4-way Cassette



MODEL NAME IDU	MMU	UP0091HP-E	UP0121HP-E	UP0151HP-E	UP0181HP-E	UP0241HP-E
Capacity Code	HP	1,0	1,25	1,7	2,0	2,5
Cooling capacity	kW	2,8	3,6	4,5	5,6	7,1
Heating capacity	kW	3,2	4,0	5,0	6,3	8,0
Air Flow	m³/h	800 - 730 - 680	800 - 730 - 680	930 - 830 - 790	1050 - 920 - 800	1290 - 920 - 800
Indoor unit dimensions (HxWxD)	mm	256 x 840 x 840	256 x 840 x 840	256 x 840 x 840	256 x 840 x 840	256 x 840 x 840
Panel RBC-U32PGP-E dimensions (HxWxD)	mm	30 x 950 x 950	30 x 950 x 950	30 x 950 x 950	30 x 950 x 950	30 x 950 x 950
Indoor unit / panel weight	Kg	18 / 4	18 / 4	20 / 4	20 / 4	20 / 4
Pipe Connection (Gas-Liquid)		3/8" - 1/4"	3/8" - 1/4"	1/2" - 1/4"	1/2" - 1/4"	5/8" - 3/8"
PRICE LIST						
Without recycling fees & VAT	€	1.310 (1.040+270)	1.360 (1.090+270)	1.400 (1.130+270)	1.440 (1.170+270)	1.480 (1.210+270)
Recycling Fees (without VAT)	€	2,20	2,20	2,40	2,40	2,40

MODEL NAME IDU	MMU	UP0271HP-E	UP0301HP-E	UP0361HP-E	UP0481HP-E	UP0561HP-E
Capacity Code	HP	3,0	3,2	4,0	5,0	6,0
Cooling capacity	kW	8,0	9,0	11,2	14,0	16,0
Heating capacity	kW	9,0	10,0	12,5	16,0	18,0
Air Flow	m³/h	1290 - 920 - 800	1320 - 1100 - 850	1970 - 1430 - 1070	2130 - 1430 - 1130	2130 - 1520 - 1230
Indoor unit dimensions (HxWxD)	mm	256 x 840 x 840	256 x 840 x 840	319 x 840 x 840	319 x 840 x 840	319 x 840 x 840
Panel RBC-U32PGP-E dimensions (HxWxD)	mm	30 x 950 x 950	30 x 950 x 950	30 x 950 x 950	30 x 950 x 950	30 x 950 x 950
Indoor unit / panel weight	Kg	20 / 4	20 / 4	25 / 4	25 / 4	25 / 4
Pipe Connection (Gas-Liquid)		5/8" - 3/8"	5/8" - 3/8"	5/8" - 3/8"	5/8" - 3/8"	5/8" - 3/8"
PRICE LIST						
Without recycling fees & VAT	€	1.510 (1.240+270)	1.660 (1.390+270)	1.760 (1.490+270)	1.850 (1.580+270)	1.900 (1.630+270)
Recycling Fees (without VAT)	€	2,40	2,40	2,90	2,90	2,90

Rated conditions - Cooling: Indoor Air Temp 27°C DB / 19°C WB, Outdoor 35°C DB.
Heating: Indoor Air Temp 20°C DB, Outdoor 7°C DB / 6°C WB.

4-way Smart Cassette



MODEL NAME IDU	MMU	UP0091H-E	UP0121H-E	UP0151H-E	UP0181H-E	UP0241H-E
Capacity Code	HP	1,0	1,25	1,7	2,0	2,5
Cooling capacity	kW	2,8	3,6	4,5	5,6	7,1
Heating capacity	kW	3,2	4,0	5,0	6,3	8,0
Air Flow	m³/h	846 - 768 - 708	846 - 768 - 708	1060 - 920 - 800	1260 - 1100 - 940	1580 - 1300 - 1120
Indoor unit dimensions (HxWxD)	mm	256 x 840 x 840	256 x 840 x 840	319 x 840 x 840	319 x 840 x 840	319 x 840 x 840
Panel RBC-U41PG(W)E dimensions (HxWxD)	mm	30 x 950 x 950	30 x 950 x 950	30 x 950 x 950	30 x 950 x 950	30 x 950 x 950
Indoor unit / panel weight	Kg	18 / 5	18 / 5	25 / 5	25 / 5	25 / 5
Pipe Connection (Gas-Liquid)		3/8" - 1/4"	3/8" - 1/4"	1/2" - 1/4"	1/2" - 1/4"	5/8" - 3/8"

PRICE LIST

Without recycling fees & VAT	€	1.920 (1.570+350)	2.070 (1.720+350)	2.280 (1.930+350)	2.390 (2.040+350)	2.460 (2.110+350)
Recycling Fees (without VAT)	€	2,30	2,30	3,00	3,00	3,00

MODEL NAME IDU	MMU	UP0271H-E	UP0301H-E	UP0361H-E	UP0481H-E	UP0561H-E
Capacity Code	HP	3,0	3,2	4,0	5,0	6,0
Cooling capacity	kW	8,0	9,0	11,2	14,0	16,0
Heating capacity	kW	9,0	10,0	12,5	16,0	18,0
Air Flow	m³/h	1770 - 1380 - 1250	1940 - 1520 - 1400	2184 - 1596 - 1260	2262 - 1740 - 1368	2282 - 1782 - 1404
Indoor unit dimensions (HxWxD)	mm	319 x 840 x 840	319 x 840 x 840	319 x 840 x 840	319 x 840 x 840	319 x 840 x 840
Panel RBC-U41PG(W)-E dimensions (HxWxD)	mm	30 x 950 x 950	30 x 950 x 950	30 x 950 x 950	30 x 950 x 950	30 x 950 x 950
Indoor unit / panel weight	Kg	25 / 5	25 / 5	25 / 5	25 / 5	25 / 5
Pipe Connection (Gas-Liquid)		5/8" - 3/8"	5/8" - 3/8"	5/8" - 3/8"	5/8" - 3/8"	5/8" - 3/8"

PRICE LIST

Without recycling fees & VAT	€	2.510 (2.160+350)	2.580 (2.230+350)	2.650 (2.300+350)	2.790 (2.440+350)	3.000 (2.650+350)
Recycling Fees (without VAT)	€	3,00	3,00	3,00	3,00	3,00

1-way Cassette



MODEL NAME IDU	MMU	UP0031YHP-E	UP0051YHP-E	UP0071YHP-E	UP0091YHP-E	UP0121YHP-E
Capacity Code	HP	0,3	0,6	0,8	1,0	1,25
Cooling capacity	kW	0,9	1,7	2,2	2,8	3,6
Heating capacity	kW	1,3	1,9	2,5	3,2	4,0
Air Flow	m³/h	480 - 370 - 270	480 - 370 - 270	500 - 390 - 270	520 - 410 - 290	540 - 420 - 290
Indoor unit dimensions (HxWxD)	mm	150 x 990 x 450	150 x 990 x 450	150 x 990 x 450	150 x 990 x 450	150 x 990 x 450
Panel RBC-UY32P-E dimensions (HxWxD)	mm	30 x 1.220 x 450	30 x 1.220 x 450	30 x 1.220 x 450	30 x 1.220 x 450	30 x 1.220 x 450
Indoor unit / panel weight	Kg	14 / 4	14 / 4	14 / 4	14 / 4	14 / 4
Pipe Connection (Gas-Liquid)		3/8" - 1/4"	3/8" - 1/4"	3/8" - 1/4"	3/8" - 1/4"	3/8" - 1/4"

PRICE LIST

Without recycling fees & VAT	€	2.520 (2.020+500)	2.540 (2.040+500)	2.550 (2.050+500)	2.560 (2.060+500)	2.580 (2.080+500)
Recycling Fees (without VAT)	€	1,80	1,80	1,80	1,80	1,80

Rated conditions - Cooling: Indoor Air Temp 27°C DB / 19°C WB, Outdoor 35°C DB.
Heating: Indoor Air Temp 20°C DB, Outdoor 7°C DB / 6°C WB.

1-way Cassette



MODEL NAME IDU	MMU	UP0151SH-E	UP0181SH-E	UP0241SH-E
Capacity Code	HP	1.7	2.0	2.5
Cooling capacity	kW	4.5	5.6	7.1
Heating capacity	kW	5.0	6.3	8.0
Air Flow	m³/h	750 - 690 - 630	780 - 720 - 660	1.140 - 960 - 810
Indoor unit dimensions (HxWxD)	mm	200 x 1.000 x 710	200 x 1.000 x 710	200 x 1.000 x 710
Panel RBC-US21PGE dimensions (HxWxD)	mm	20 x 1.230 x 530	20 x 1.230 x 530	20 x 1.230 x 530
Indoor unit / panel weight	Kg	21 / 5,5	21 / 5,5	22 / 5,5
Pipe Connection (Gas-Liquid)		1/2" - 1/4"	1/2" - 1/4"	5/8" - 3/8"
PRICE LIST				
Without recycling fees & VAT	€	2.650 (2.100+550)	2.690 (2.140+550)	2.980 (2.430+550)
Recycling Fees (without VAT)	€	2,65	2,65	2,65

2-way Cassette



MODEL NAME IDU	MMU	UP0071WH-E	UP0091WH-E	UP0121WH-E	UP0151WH-E	UP0181WH-E	UP0241WH-E
Capacity Code	HP	0,8	1,0	1,25	1,7	2,0	2,5
Cooling capacity	kW	2,2	2,8	3,6	4,5	5,6	7,1
Heating capacity	kW	2,5	3,2	4,0	5,0	6,3	8,0
Air Flow	m³/h	558 - 498 - 450	558 - 498 - 450	558 - 498 - 450	600 - 534 - 450	900 - 750 - 618	1.050 - 840 - 738
Indoor unit dimensions (HxWxD)	mm	295 x 815 x 570	295 x 815 x 570	295 x 815 x 570	295 x 815 x 570	345 x 1.180 x 570	345 x 1.180 x 570
Panel RBC-UW283PG(W)-E / UW803PG(W) -E dimensions (HxWxD)	mm	20 x 1.050 x 680	20 x 1.050 x 680	20 x 1.050 x 680	20 x 1.050 x 680	20 x 1.415 x 680	20 x 1.415 x 680
Indoor unit / panel weight	Kg	18 / 10	18 / 10	18 / 10	18 / 10	26 / 14	26 / 14
Pipe Connection (Gas-Liquid)		3/8" - 1/4"	3/8" - 1/4"	3/8" - 1/4"	1/2" - 1/4"	1/2" - 1/4"	5/8" - 3/8"
PRICE LIST							
Without recycling fees & VAT	€	2.140 (1.660+480)	2.170 (1.690+480)	2.190 (1.710+480)	2.310 (1.830+480)	2.580 (1.930+650)	2.710 (2.060+650)
Recycling Fees (without VAT)	€	2,80	2,80	2,80	2,80	4,00	4,00

MODEL NAME IDU	MMU	UP0271WH-E	UP0301WH-E	UP0361WH-E	UP0481WH-E	UP0561WH-E
Capacity Code	HP	3,0	3,2	4,0	5,0	6,0
Cooling capacity	kW	8,0	9,0	11,2	14,0	16,0
Heating capacity	kW	9,0	10,0	12,5	16,0	18,0
Air Flow	m³/h	1.050 - 840 - 738	1.260 - 900 - 780	1.740 - 1.434 - 1.182	1.800 - 1.482 - 1.230	2.040 - 1.578 - 1.320
Indoor unit dimensions (HxWxD)	mm	345 x 1.180 x 570	345 x 1.180 x 570	345 x 1.600 x 570	345 x 1.600 x 570	345 x 1.600 x 570
Panel RBC-UW803PG(W) -E / UW1403PG(W) -E dimensions (HxWxD)	mm	20 x 1.415 x 680	20 x 1.415 x 680	20 x 1.835 x 680	20 x 1.835 x 680	20 x 1.835 x 680
Indoor unit / panel weight	Kg	26 / 14	26 / 14	35 / 14	35 / 14	35 / 14
Pipe Connection (Gas-Liquid)		5/8" - 3/8"	5/8" - 3/8"	5/8" - 3/8"	5/8" - 3/8"	5/8" - 3/8"
PRICE LIST						
Without recycling fees & VAT	€	3.100 (2.450+650)	3.350 (2.700+650)	3.980 (3.230+750)	4.300 (3.550+750)	4.660 (3.910+750)
Recycling Fees (without VAT)	€	4,00	4,00	4,90	4,90	4,90

Rated conditions - Cooling: Indoor Air Temp 27°C DB / 19°C WB, Outdoor 35°C DB.
Heating: Indoor Air Temp 20°C DB, Outdoor 7°C DB / 6°C WB.

High Wall



MODEL NAME IDU	MMK	UP0031HP-E	UP0051HP-E	UP0071HP-E	UP0091HP-E	UP0121HP-E	UP0151HP-E
Capacity Code	HP	0,3	0,6	0,8	1,0	1,25	1,7
Cooling capacity	kW	0,9	1,7	2,2	2,8	3,6	4,5
Heating capacity	kW	1,3	1,9	2,5	3,2	4,0	5,0
Air Flow	m³/h	455 - 370 - 270	455 - 370 - 270	480 - 385 - 270	510 - 395 - 270	540 - 410 - 270	840 - 690 - 550
Indoor unit dimensions (HxWxD)	mm	293 x 798 x 230	293 x 798 x 230	293 x 798 x 230	293 x 798 x 230	293 x 798 x 230	293 x 1.050 x 250
Indoor unit weight	Kg	11	11	11	11	11	16
Pipe Connection (Gas-Liquid)		3/8" - 1/4"	3/8" - 1/4"	3/8" - 1/4"	3/8" - 1/4"	3/8" - 1/4"	1/2" - 1/4"

PRICE LIST

Without recycling fees & VAT	€	790	800	820	840	850	950
Recycling Fees (without VAT)	€	1,10	1,10	1,10	1,10	1,10	1,60

MODEL NAME IDU	MMK	UP0181HP-E	UP0241HP-E	UP0271HP-E	UP0301HP-E	UP0361HP-E
Capacity Code	HP	2,0	2,5	3,0	3,2	4,0
Cooling capacity	kW	5,6	7,1	8,0	9,0	11,2
Heating capacity	kW	6,3	8,0	9,0	10,0	12,5
Air Flow	m³/h	900 - 720 - 550	1.200 - 900 - 600	1.200 - 1.000 - 800	1.450 - 1.300 - 1.100	1.650 - 1.300 - 1.250
Indoor unit dimensions (HxWxD)	mm	293 x 1.050 x 250	293 x 1.050 x 250	350 x 1.200 x 280	350 x 1.200 x 280	350 x 1.200 x 280
Indoor unit weight	Kg	16	16	20	20	20
Pipe Connection (Gas-Liquid)		1/2" - 1/4"	5/8" - 3/8"	5/8" - 3/8"	5/8" - 3/8"	5/8" - 3/8"

PRICE LIST

Without recycling fees & VAT	€	970	990	1.200	1.260	1.330
Recycling Fees (without VAT)	€	1,60	1,60	2,00	2,00	2,00

Slim duct type



MODEL NAME IDU	MMD	UP0031SPHY-E	UP0051SPHY-E	UP0071SPHY-E	UP0091SPHY-E	UP0121SPHY-E
Capacity Code	HP	0,3	0,6	0,8	1,0	1,25
Cooling capacity	kW	0,9	1,7	2,2	2,8	3,6
Heating capacity	kW	1,3	1,9	2,5	3,2	4,0
Air Flow	m³/h	410 - 370 - 350	450 - 410 - 380	540 - 460 - 400	570 - 500 - 420	600 - 520 - 440
External Static Pressure (Std/Max)	Pa	10 / 50	10 / 50	10 / 50	10 / 50	10 / 50
Indoor unit dimensions (HxWxD)	mm	210 x 700 x 450	210 x 700 x 450	210 x 700 x 450	210 x 700 x 450	210 x 700 x 450
Indoor unit weight	Kg	15	15	15	15	15
Pipe Connection (Gas-Liquid)		3/8" - 1/4"	3/8" - 1/4"	3/8" - 1/4"	3/8" - 1/4"	3/8" - 1/4"

PRICE LIST

Without recycling fees & VAT	€	960	1.030	1.030	1.040	1.050
Recycling Fees (without VAT)	€	1,50	1,50	1,50	1,50	1,50

Rated conditions - Cooling: Indoor Air Temp 27°C DB / 19°C WB, Outdoor 35°C DB.
Heating: Indoor Air Temp 20°C DB, Outdoor 7°C DB / 6°C WB.

Slim duct type



MODEL NAME IDU	MMD	UP0151SPHY-E	UP0181SPHY-E	UP0241SPHY-E	UP0271SPHY-E
Capacity Code	HP	1,7	2,0	2,5	3,0
Cooling capacity	kW	4,5	5,6	7,1	8,0
Heating capacity	kW	5,0	6,3	8,0	9,0
Air Flow	m³/h	690 - 640 - 550	780 - 730 - 650	1.080 - 950 - 860	1.140 - 980 - 910
External Static Pressure (Std/Max)	Pa	10 / 50	10 / 50	10 / 50	10 / 50
Indoor unit dimensions (HxWxD)	mm	210 x 900 x 450	210 x 900 x 450	210 x 1.100 x 450	210 x 1.100 x 450
Indoor unit weight	Kg	19	19	22	22
Pipe Connection (Gas-Liquid)		1/2" - 1/4"	1/2" - 1/4"	5/8" - 3/8"	5/8" - 3/8"
PRICE LIST					
Without recycling fees & VAT	€	1.090	1.110	1.280	1.390
Recycling Fees (without VAT)	€	1,90	1,90	2,20	2,20

Concealed Medium Static duct type



MODEL NAME IDU	MMD	UP0051BHP-E	UP0071BHP-E	UP0091BHP-E	UP0121BHP-E	UP0151BHP-E	UP0181BHP-E
Capacity Code	HP	0,6	0,8	1,0	1,25	1,7	2,0
Cooling capacity	kW	1,7	2,2	2,8	3,6	4,5	5,6
Heating capacity	kW	1,9	2,5	3,2	4,0	5,0	6,3
Air Flow	m³/h	540 - 450 - 360	540 - 450 - 360	570 - 480 - 390	570 - 480 - 390	920 - 660 - 540	920 - 660 - 540
External Static Pressure (Std/Max)	Pa	30 / 150	30 / 150	30 / 150	30 / 150	30 / 150	30 / 150
Indoor unit dimensions (HxWxD)	mm	275 x 700 x 750	275 x 700 x 750	275 x 700 x 750	275 x 700 x 750	275 x 700 x 750	275 x 700 x 750
Indoor unit weight	Kg	23	23	23	23	23	23
Pipe Connection (Gas-Liquid)		3/8" - 1/4"	3/8" - 1/4"	3/8" - 1/4"	3/8" - 1/4"	1/2" - 1/4"	1/2" - 1/4"
PRICE LIST							
Without recycling fees & VAT	€	1.060	1.070	1.080	1.090	1.120	1.160
Recycling Fees (without VAT)	€	2,30	2,30	2,30	2,30	2,30	2,30

MODEL NAME IDU	MMD	UP0241BHP-E	UP0271BHP-E	UP0301BHP-E	UP0361BHP-E	UP0481BHP-E	UP0561BHP-E
Capacity Code	HP	2,5	3,0	3,2	4,0	5,0	6,0
Cooling capacity	kW	7,1	8,0	9,0	11,2	14,0	16,0
Heating capacity	kW	8,0	9,0	10,0	12,5	16,0	18,0
Air Flow	m³/h	1320 - 1090 - 870	1320 - 1090 - 870	1450 - 1200 - 960	1920 - 1620 - 1380	2350 - 1920 - 1500	2350 - 1920 - 1500
External Static Pressure (Std/Max)	Pa	40 / 150	40 / 150	40 / 150	50 / 150	50 / 150	50 / 150
Indoor unit dimensions (HxWxD)	mm	275 x 1.000 x 750	275 x 1.000 x 750	275 x 1.000 x 750	275 x 1.400 x 750	275 x 1.400 x 750	275 x 1.400 x 750
Indoor unit weight	Kg	30	30	30	40	40	40
Pipe Connection (Gas-Liquid)		5/8" - 3/8"	5/8" - 3/8"	5/8" - 3/8"	5/8" - 3/8"	5/8" - 3/8"	5/8" - 3/8"
PRICE LIST							
Without recycling fees & VAT	€	1.250	1.310	1.400	1.550	1.570	1.600
Recycling Fees (without VAT)	€	3,00	3,00	3,00	4,00	4,00	4,00

Rated conditions - Cooling: Indoor Air Temp 27°C DB / 19°C WB, Outdoor 35°C DB.
Heating: Indoor Air Temp 20°C DB, Outdoor 7°C DB / 6°C WB.

High Static duct type



MODEL NAME IDU	MMD	UP0181HP-E	UP0241HP-E	UP0271HP-E	UP0361HP-E
Capacity Code	HP	2,0	2,5	3,0	4,0
Cooling capacity	kW	5,6	7,1	8,0	11,2
Heating capacity	kW	6,3	8,0	9,0	12,5
Air Flow	m³/h	1.100 - 990 - 900	1.200 - 1.050 - 960	1.500 - 1.350 - 1.200	1.920 - 1.560 - 1.340
External Static Pressure (Std/Max)	Pa	100 / 200	100 / 200	100 / 200	100 / 200
Indoor unit dimensions (HxWxD)	mm	298 x 1.000 x 750	298 x 1.000 x 750	298 x 1.000 x 750	298 x 1.400 x 750
Indoor unit weight	Kg	34	34	34	43
Pipe Connection (Gas-Liquid)		1/2" - 1/4"	5/8" - 3/8"	5/8" - 3/8"	5/8" - 3/8"
PRICE LIST					
Without recycling fees & VAT	€	1.760	1.810	1.870	2.080
Recycling Fees (without VAT)	€	3,40	3,40	3,40	4,30

MODEL NAME IDU	MMD	UP0481HP-E	UP0561HP-E	UP0721HP-E1	UP0961HP-E1
Capacity Code	HP	5,0	6,0	8,0	10,0
Cooling capacity	kW	14,0	16,0	22,4	28,0
Heating capacity	kW	16,0	18,0	25,0	31,5
Air Flow	m³/h	2.340 - 1.980 - 1.695	2.760 - 2.340 - 1.920	3.800 - 3.200 - 2.500	4.800 - 4.200 - 3.500
External Static Pressure (Std/Max)	Pa	100 / 200	100 / 200	150 / 250	150 / 250
Indoor unit dimensions (HxWxD)	mm	298 x 1.400 x 750	298 x 1.400 x 750	448 x 1.400 x 900	448 x 1.400 x 900
Indoor unit weight	Kg	43	43	97	97
Pipe Connection (Gas-Liquid)		5/8" - 3/8"	5/8" - 3/8"	7/8" - 1/2"	7/8" - 1/2"
PRICE LIST					
Without recycling fees & VAT	€	2.240	2.320	4.550	4.750
Recycling Fees (without VAT)	€	4,30	4,30	9,70	9,70

Console type



MODEL NAME IDU	MML	UP0071NHP-E	UP0091NHP-E	UP0121NHP-E	UP0151NHP-E	UP0181NHP-E
Capacity Code	HP	0,8	1,0	1,25	1,7	2,0
Cooling capacity	kW	2,2	2,8	3,6	4,5	5,6
Heating capacity	kW	2,5	3,2	4,0	5,0	6,3
Air Flow	m³/h	510 - 366 - 282	510 - 366 - 282	552 - 408 - 324	624 - 466 - 384	726 - 528 - 426
Indoor unit dimensions (HxWxD)	mm	600 x 700 x 220	600 x 700 x 220	600 x 700 x 220	600 x 700 x 220	600 x 700 x 220
Indoor unit weight	Kg	17	17	17	17	17
Pipe Connection (Gas-Liquid)		3/8" - 1/4"	3/8" - 1/4"	3/8" - 1/4"	1/2" - 1/4"	1/2" - 1/4"
PRICE LIST						
Without recycling fees & VAT	€	1.180	1.260	1.350	1.450	1.500
Recycling Fees (without VAT)	€	1,70	1,70	1,70	1,70	1,70

Rated conditions - Cooling: Indoor Air Temp 27°C DB / 19°C WB, Outdoor 35°C DB.
Heating: Indoor Air Temp 20°C DB, Outdoor 7°C DB / 6°C WB.

Ceiling type



MODEL NAME IDU	MMC	UP0151HP-E	UP0181HP-E	UP0241HP-E	UP0271HP-E
Capacity Code	HP	1,7	2,0	2,5	3,0
Cooling capacity	kW	4,5	5,6	7,1	8,0
Heating capacity	kW	5,0	6,3	8,0	9,0
Air Flow	m³/h	840 - 690 - 540	960 - 720 - 540	1.440 - 1.020 - 750	1.440 - 1.020 - 750
Indoor unit dimensions (HxWxD)	mm	235 x 950 x 690	235 x 950 x 690	235 x 1.270 x 690	235 x 1.270 x 690
Indoor unit weight	Kg	24	24	30	30
Pipe Connection (Gas-Liquid)		1/2" - 1/4"	1/2" - 1/4"	5/8" - 3/8"	5/8" - 3/8"

PRICE LIST

Without recycling fees & VAT	€	1.720	1.810	1.930	2.020
Recycling Fees (without VAT)	€	2,40	2,40	3,00	3,00

MODEL NAME IDU	MMC	UP0361HP-E	UP0481HP-E	UP0561HP-E
Capacity Code	HP	4,0	5,0	6,0
Cooling capacity	kW	11,2	14,0	16,0
Heating capacity	kW	12,5	16,0	18,0
Air Flow	m³/h	1.860 - 1.350 - 1.020	1.860 - 1.530 - 1.200	2.040 - 1.650 - 1.260
Indoor unit dimensions (HxWxD)	mm	235 x 1.586 x 690	235 x 1.586 x 690	235 x 1.586 x 690
Indoor unit weight	Kg	39	39	39
Pipe Connection (Gas-Liquid)		5/8" - 3/8"	5/8" - 3/8"	5/8" - 3/8"

PRICE LIST

Without recycling fees & VAT	€	2.070	2.220	2.370
Recycling Fees (without VAT)	€	3,90	3,90	3,90

Floor Standing Concealed type



MODEL NAME IDU	MML	UP0071BH-E	UP0091BH-E	UP0121BH-E	UP0151BH-E	UP0181BH-E	UP0241BH-E
Capacity Code	HP	0,8	1,0	1,25	1,7	2,0	2,5
Cooling capacity	kW	2,2	2,8	3,6	4,5	5,6	7,1
Heating capacity	kW	2,5	3,2	4,0	5,0	6,3	8,0
Air Flow	m³/h	460 - 400 - 300	460 - 400 - 300	460 - 400 - 300	740 - 600 - 490	740 - 600 - 490	950 - 790 - 640
Indoor unit dimensions (HxWxD)	mm	600 x 745 x 220	600 x 745 x 220	600 x 745 x 220	600 x 1.045 x 220	600 x 1.045 x 220	600 x 1.045 x 220
Indoor unit weight	Kg	21	21	21	29	29	29
Pipe Connection (Gas-Liquid)		3/8" - 1/4"	3/8" - 1/4"	3/8" - 1/4"	1/2" - 1/4"	1/2" - 1/4"	5/8" - 3/8"

PRICE LIST

Without recycling fees & VAT	€	1.450	1.490	1.510	1.550	1.590	1.750
Recycling Fees (without VAT)	€	2,10	2,10	2,10	2,90	2,90	2,90

Rated conditions - Cooling: Indoor Air Temp 27°C DB / 19°C WB, Outdoor 35°C DB.
Heating: Indoor Air Temp 20°C DB, Outdoor 7°C DB / 6°C WB.

Floor Console type



MODEL NAME IDU	MML	UP0071H-E	UP0091H-E	UP0121H-E	UP0151H-E	UP0181H-E	UP0241H-E
Capacity Code	HP	0,8	1,0	1,25	1,7	2,0	2,5
Cooling capacity	kW	2,2	2,8	3,6	4,5	5,6	7,1
Heating capacity	kW	2,5	3,2	4,0	5,0	6,3	8,0
Air Flow	m³/h	480 - 420 - 360	480 - 420 - 360	900 - 780 - 650	900 - 780 - 650	1.080 - 930 - 780	1.080 - 930 - 780
Indoor unit dimensions (HxWxD)	mm	630 x 950 x 230	630 x 950 x 230	630 x 950 x 230	630 x 950 x 230	630 x 950 x 230	630 x 950 x 230
Indoor unit weight	Kg	37	37	37	37	40	40
Pipe Connection (Gas-Liquid)		3/8" - 1/4"	3/8" - 1/4"	3/8" - 1/4"	1/2" - 1/4"	1/2" - 1/4"	5/8" - 3/8"

PRICE LIST

Without recycling fees & VAT	€	1.710	1.730	1.830	1.870	1.920	2.360
Recycling Fees (without VAT)	€	3,70	3,70	3,70	3,70	4,00	4,00

Floor Standing type



MODEL NAME IDU	MMF	UP0151H-E	UP0181H-E	UP0241H-E	UP0271H-E
Capacity Code	HP	1,7	2,0	2,5	3,0
Cooling capacity	kW	4,5	5,6	7,1	8,0
Heating capacity	kW	5,0	6,3	8,0	9,0
Air Flow	m³/h	900 - 780 - 660	900 - 780 - 660	1.200 - 990 - 840	1.200 - 990 - 840
Indoor unit dimensions (HxWxD)	mm	1.750 x 600 x 210	1.750 x 600 x 210	1.750 x 600 x 210	1.750 x 600 x 210
Indoor unit weight	Kg	46	46	47	47
Pipe Connection (Gas-Liquid)		1/2" - 1/4"	1/2" - 1/4"	5/8" - 3/8"	5/8" - 3/8"

PRICE LIST

Without recycling fees & VAT	€	2.360	2.490	2.670	2.760
Recycling Fees (without VAT)	€	4,60	4,60	4,70	4,70

MODEL NAME IDU	MMF	UP0361H-E	UP0481H-E	UP0561H-E
Capacity Code	HP	4,0	5,0	6,0
Cooling capacity	kW	11,2	14,0	16,0
Heating capacity	kW	12,5	16,0	18,0
Air Flow	m³/h	1.920 - 1.620 - 1.380	2.160 - 1.730 - 1.560	2.160 - 1.730 - 1.560
Indoor unit dimensions (HxWxD)	mm	1.750 x 600 x 390	1.750 x 600 x 390	1.750 x 600 x 390
Indoor unit weight	Kg	62	62	62
Pipe Connection (Gas-Liquid)		5/8" - 3/8"	5/8" - 3/8"	5/8" - 3/8"

PRICE LIST

Without recycling fees & VAT	€	2.820	3.000	3.300
Recycling Fees (without VAT)	€	6,20	6,20	6,20

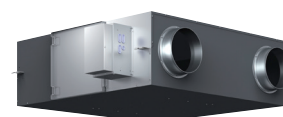
Rated conditions - Cooling: Indoor Air Temp 27°C DB / 19°C WB, Outdoor 35°C DB.
Heating: Indoor Air Temp 20°C DB, Outdoor 7°C DB / 6°C WB.

Fresh Air Intake type



MODEL NAME IDU	MMD	UP0401HFP-E	UP0721HFP-E	UP0961HFP-E	UP1121HFP-E	UP1281HFP-E
Capacity Code	HP	5	8	10	12	14
Cooling capacity	kW	14,0	22,4	28,0	33,5	40,0
Heating capacity	kW	8,9	13,9	17,4	20,8	25,2
Air Flow	m³/h	1.080 - 930 - 760	1.680 - 1.440 - 1.200	2.100 - 1.800 - 1.470	2.520 - 2.130 - 1.770	3.060 - 2.580 - 2.130
External Static Pressure (Std/Max)	Pa	100 / 200	100 / 200	100 / 200	100 / 200	100 / 200
Indoor unit dimensions (HxWxD)	mm	327 x 1.430 x 750	477 x 1.430 x 900	477 x 1.430 x 900	477 x 1.430 x 900	477 x 1.430 x 900
Indoor unit weight	Kg	44	99	99	99	99
Pipe Connection (Gas-Liquid)		5/8" - 3/8"	7/8" - 1/2"	7/8" - 1/2"	1 1/8" - 1/2"	1 1/8" - 5/8"
PRICE LIST						
Without recycling fees & VAT	€	2.740	6.330	6.770	7.250	7.760
Recycling Fees (without VAT)	€	4,40	9,90	9,90	9,90	9,90

Air to Air Heat Exchanger with DX-coil



MODEL NAME IDU (w/out humidifier)	MMD	VN502HEX1E	VN802HEX1E	VN1002HEX1E
Capacity Code	HP	1	1,7	2
Cooling capacity	kW	4,1 (1,3)	6,56 (2,06)	8,25 (2,32)
Heating capacity	kW	5,53 (2,33)	8,61 (3,61)	10,92 (4,32)
Air Flow	m³/h	500 - 500 - 440	800 - 800 - 640	950 - 950 - 820
External Static Pressure	Pa	100	120	135
Indoor unit dimensions (HxWxD)	mm	430 x 1.140 x 1.690	430 x 1.189 x 1.739	430 x 1.189 x 1.739
Indoor unit weight	Kg	84	100	101
Pipe Connection (Gas-Liquid)		3/8" - 1/4"	1/2" - 1/4"	1/2" - 1/4"
PRICE LIST				
Without recycling fees & VAT	€	6.100	7.300	8.500
Recycling Fees (without VAT)	€	8,40	10,00	10,10

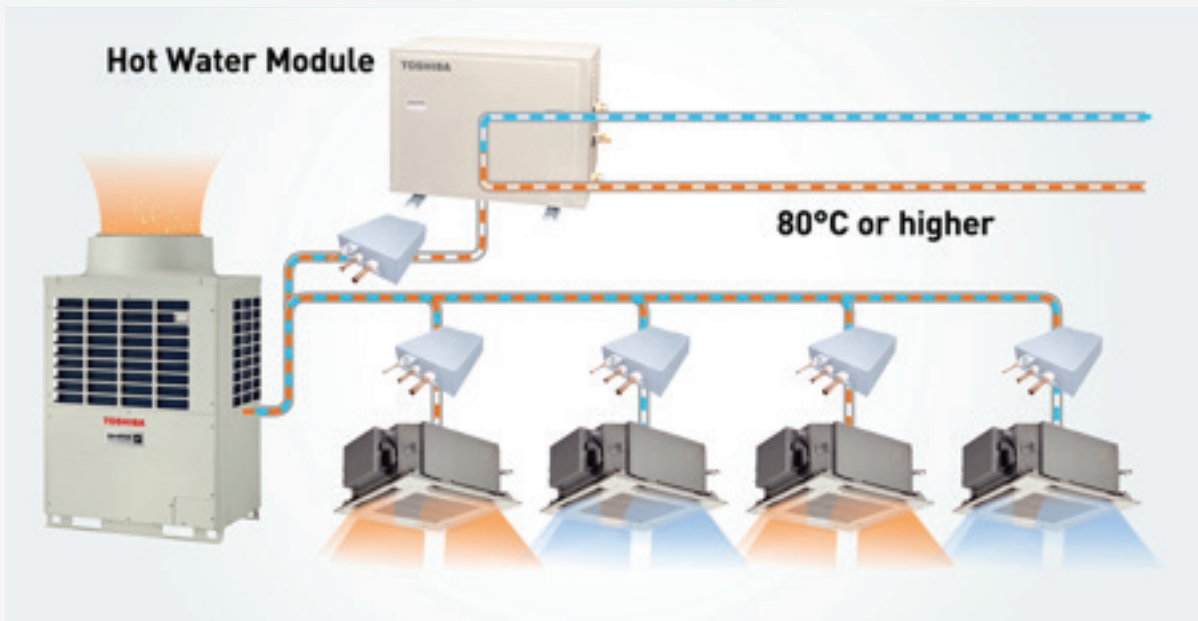
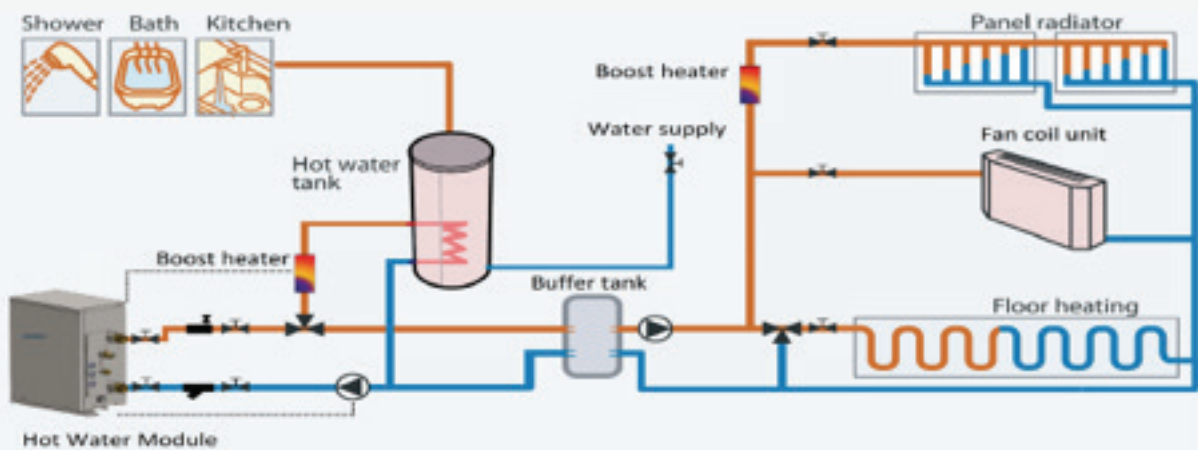
MODEL NAME IDU (with humidifier)	MMD	VNK502HEX1E	VNK802HEX1E	VNK1002HEX1E
Capacity Code	HP	1	1,7	2
Cooling capacity	kW	4,1 (1,3)	6,56 (2,06)	8,25 (2,32)
Heating capacity	kW	5,53 (2,33)	8,61 (3,61)	10,92 (4,32)
Air Flow	m³/h	500 - 500 - 440	800 - 800 - 640	950 - 950 - 820
External Static Pressure	Pa	95	105	110
Indoor unit dimensions (HxWxD)	mm	430 x 1.140 x 1.690	430 x 1.189 x 1.739	430 x 1.189 x 1.739
Indoor unit weight	Kg	91	111	112
Pipe Connection (Gas-Liquid)		3/8" - 1/4"	1/2" - 1/4"	1/2" - 1/4"
PRICE LIST				
Without recycling fees & VAT	€	8.500	11.500	13.200
Recycling Fees (without VAT)	€	9,10	11,10	11,20

Rated conditions - Cooling: Indoor Air Temp 27°C DB / 19°C WB, Outdoor 35°C DB.
Heating: Indoor Air Temp 20°C DB, Outdoor 7°C DB / 6°C WB.

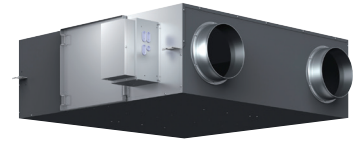
Hot water Module



MODEL NAME IDU	MMW	UP0271LQ-E	UP0561LQ-E	AP0481CHQ-E
Capacity Code	HP	3	6	4,5
Cooling capacity	kW	-	-	-
Heating capacity	kW	8,0	16,0	14,0
Water outlet temperature	°C	25 - 50	25 - 50	50 - 82
Indoor unit dimensions (HxWxD)	mm	580 x 400 x 250	580 x 400 x 250	700 x 900 x 320
Indoor unit weight	Kg	18	20	100
Pipe Connection (Gas-Liquid)		5/8" - 3/8"	5/8" - 3/8"	5/8" - 3/8"
Water Flow & Return connections		1 1/4" - 1 1/4"	1 1/4" - 1 1/4"	1 1/4" - 1 1/4"
PRICE LIST				
Without recycling fees & VAT	€	3.340	3.460	7.560
Recycling Fees (without VAT)	€	1,80	2,00	10,00



Air to Air Heat Exchanger



MODEL NAME IDU	VN	M150HE	M250HE	M350HE	M500HE	M650HE
Air Flow	m³/h	150 - 150 - 110	250 - 250 - 155	350 - 350 - 210	500 - 500 - 390	650 - 650 - 520
External Static Pressure	Pa	102	96	125	150	107
Temperature Exchange Efficiency	%	81,5	78,0	74,5	76,5	75,0
Enthalpy Exchange Efficiency Cooling	%	69,5	65,0	60,5	64,5	61,5
Enthalpy Exchange Efficiency Heating	%	74,5	70,0	65,0	72,0	69,5
Indoor unit dimensions (HxWxD)	mm	290 x 900 x 900	290 x 900 x 900	290 x 900 x 900	350 x 1.140 x 1.140	350 x 1.140 x 1.140
Indoor unit weight	Kg	36	36	38	53	53
Duct Nominal Diameter Supply / Return	mm	100 x 2 / 100 x 2	150 x 2 / 150 x 2	150 x 2 / 150 x 2	200 x 2 / 200 x 2	200 x 2 / 200 x 2
PRICE LIST						
Without recycling fees & VAT	€	1.880	1.920	2.100	2.680	3.200
Recycling Fees (without VAT)	€	3,60	3,60	3,80	5,30	5,30

MODEL NAME IDU	VN	M800HE	M1000HE1	M1500HE1	M2000HE1
Air Flow	m³/h	800 - 800 - 700	1.000 - 1.000 - 700	1.500 - 1.500 - 1.200	2.000 - 2.000 - 1.400
External Static Pressure	Pa	158	105	140	105
Temperature Exchange Efficiency	%	76,5	73,5	76,5	73,5
Enthalpy Exchange Efficiency Cooling	%	64,0	60,5	64,0	60,5
Enthalpy Exchange Efficiency Heating	%	71,0	68,5	71,0	68,5
Indoor unit dimensions (HxWxD)	mm	400 x 1.189 x 1.189	400 x 1.189 x 1.189	810 x 1.189 x 1.189	810 x 1.189 x 1.189
Indoor unit weight	Kg	82	82	126	126
Duct Nominal Diameter Supply / Return	mm	250 x 2 / 250 x 2	250 x 2 / 250 x 2	250 x 4 / 283 x 730 x 2	250 x 4 / 283 x 730 x 2
PRICE LIST					
Without recycling fees & VAT	€	3.700	4.200	7.050	8.100
Recycling Fees (without VAT)	€	8,20	8,20	12,60	12,60

AHU DX-coil Interface 0-10V BMS Control



DX CONTROLLER	RBC	DXC031	DXC031	DXC031
DX VALVE KIT	MM	DXV141	DXV281	DXV281
Capacity Code	HP	6	8	10,0
Cooling capacity	kW	16,0	22,4	28,0
Heating capacity	kW	18,0	25,0	31,5
Air Flow (Max-Min)	m³/h	3.690 - 23.300	5.160 - 3.010	6.000 - 3.500
CONTROLLER dimensions (HxWxD)	mm	400 x 300 x 150	400 x 300 x 150	400 x 300 x 150
Indoor unit weight	Kg	8	8	8
Coil Diameter		3/8"	3/8"	3/8"
PRICE LIST				
Without recycling fees & VAT	€	1.860	1.860	1.860
Recycling Fees (without VAT)	€	0,80	0,80	0,80

Rated conditions - Cooling: Indoor Air Temp 27°C DB / 19°C WB, Outdoor 35°C DB.
Heating: Indoor Air Temp 20°C DB, Outdoor 7°C DB / 6°C WB.

AHU DX-coil Interface



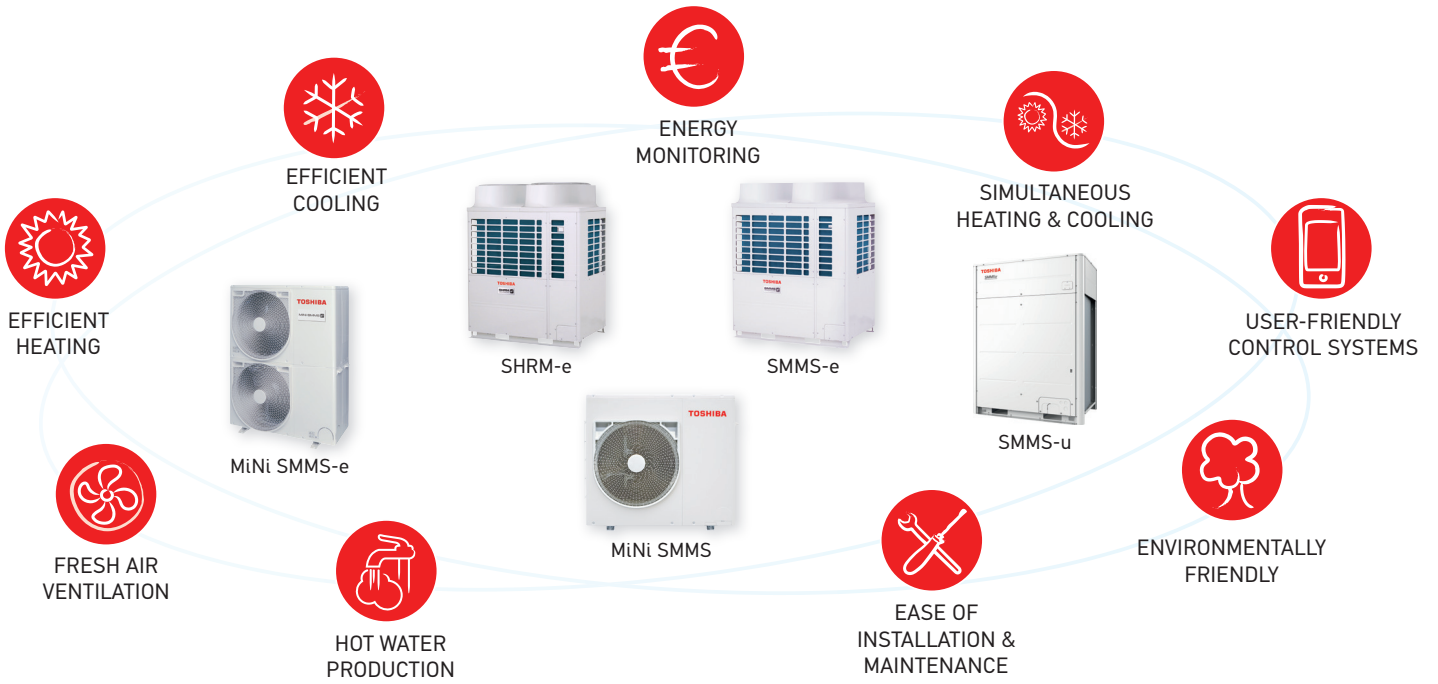
DX CONTROLLER	MM	DXC010	DXC010	DXC010	DXC010	DXC010	DXC010
DX VALVE KIT	MM	DXV080	DXV080	DXV080	DXV140	DXV140	DXV140
Capacity Code	HP	2	2,5	3,0	4,0	5,0	6,0
Cooling capacity	kW	5,6	7,1	8,0	11,2	14,0	16,0
Heating capacity	kW	6,3	8,0	9,0	12,5	16,0	18,0
Air Flow (Max-Nom-Min)	m³/h	1.080 - 900 - 720	1.580 - 1.320 - 1.060	1.580 - 1.320 - 1.060	1.920 - 1.600 - 1.280	2.520 - 2.100 - 1.680	3.740 - 2.800 - 1.850
CONTROLLER dimensions (HxWxD)	mm	400 x 300 x 150	400 x 300 x 150	400 x 300 x 150	400 x 300 x 150	400 x 300 x 150	400 x 300 x 150
Indoor unit weight	Kg	8	8	8	8	8	8
Coil Diameter		3/8"	3/8"	3/8"	3/8"	3/8"	3/8"
PRICE LIST							
Without recycling fees & VAT	€	1.650	1.650	1.650	1.650	1.650	1.650
Recycling Fees (without VAT)	€	0,80	0,80	0,80	0,80	0,80	0,80

DX CONTROLLER	MM	DXC010	DXC010	DXC010 +DXC012	DXC010 +DXC012	DXC010 +DXC012
DX VALVE KIT	MM	DXV280	DXV280	DXV140 x 2	DXV280 + DXV140	DXV280 x 2
Capacity Code	HP	8	10,0	12	14	16
Cooling capacity	kW	22,4	28,0	33,5	40	45
Heating capacity	kW	25,0	31,5	33,5	40	45
Air Flow (Max-Nom-Min)	m³/h	4.320 - 3.600 - 2.880	5.040 - 4.200 - 3.360	7.480 - 3.700	8.060 - 4.730	8.640 - 5.760
CONTROLLER dimensions (HxWxD)	mm	400 x 300 x 150	400 x 300 x 150	400 x 300 x 150 x 2	400 x 300 x 150 x 2	400 x 300 x 150 x 2
Indoor unit weight	Kg	8	8	8 x 2	8 x 2	8 x 2
Coil Diameter		3/8"	3/8"	3/8"	3/8"	3/8"
PRICE LIST						
Without recycling fees & VAT	€	1.650	1.650	3.050	3.050	3.050
Recycling Fees (without VAT)	€	0,80	0,80	1,60	1,60	1,60

DX CONTROLLER	MM	DXC010 +DXC012	DXC010 +DXC012	DXC010 +2 x DXC012	DXC010 +2 x DXC012
DX VALVE KIT	MM	DXV280 x 2	DXV280 x 2	DXV080 x 2 + DXV-140	DXV280 x 3
Capacity Code	HP	18	20	22	24
Cooling capacity	kW	50,4	56	61,5	67
Heating capacity	kW	50,4	56	61,5	67
Air Flow (Max-Min)	m³/h	9.360 - 6.240	10.080 - 6.720	12.380 - 7.610	12.960 - 8.640
CONTROLLER dimensions (HxWxD)	mm	400 x 300 x 150 x 2	400 x 300 x 150 x 2	400 x 300 x 150 x 3	400 x 300 x 150 x 3
Indoor unit weight	Kg	8 x 2	8 x 2	8 x 3	8 x 3
Coil Diameter		3/8"	3/8"	3/8"	3/8"
PRICE LIST					
Without recycling fees & VAT	€	3.050	3.050	4.450	4.450
Recycling Fees (without VAT)	€	1,60	1,60	2,40	2,40

* Available connections with DX control + valve kit up to 60 HP

Rated conditions - Cooling: Indoor Air Temp 27°C DB / 19°C WB, Outdoor 35°C DB.
Heating: Indoor Air Temp 20°C DB, Outdoor 7°C DB / 6°C WB.







TOSHIBA

ACCESSORIES

TOSHIBA









Accessories – Piping Kits

				Value (€)	
Branch Joints		RBM-BT14E	VRF CDU 2 - Pipe Modular Kit	SMMS - u Capacities below 26 HP	190
		RBM-BT24E	VRF CDU 2 - Pipe Modular Kit	SMMS - u Capacities above 26 HP	240
		RBM-BT34E	VRF CDU 2 - Pipe Modular Kit	SMMS - u Capacities above 62 HP	320
		RBM-BT14FE	VRF CDU 3 - Pipe Modular Kit	SHRM - e Capacities below 26 HP	190
		RBM-BT24FE	VRF CDU 3 - Pipe Modular Kit	SHRM - e Capacities above 26 HP	260
	Y – Joints		RBM-BY55E	VRF 2 - Pipe Y - Joint	SMMS - u Capacities below 6,4 HP
RBM-BY105E			VRF 2 - Pipe Y - Joint	SMMS - u Capacities 6,4 - 14,2HP	110
RBM-BY205E			VRF 2 - Pipe Y - Joint	SMMS - u Capacities 14,2 - 25,2HP	200
RBM-BY305E			VRF 2 - Pipe Y - Joint	SMMS - u Capacities 25,2 - 61,2HP	250
RBM-BY405E			VRF 2 - Pipe Y - Joint	SMMS - u Capacities above 61,2HP	330
		RBM-BY55FE	VRF 3 - Pipe Y - Joint	SHRM - e Capacities below 6,4 HP	130
		RBM-BY105FE	VRF 3 - Pipe Y - Joint	SHRM - e Capacities 6,4 - 14,2HP	160
		RBM-BY205FE	VRF 3 - Pipe Y - Joint	SHRM - e Capacities 14,2 - 25,2HP	250
		RBM-BY305FE	VRF 3 - Pipe Y - Joint	SHRM - e Capacities above 25,2HP	320
		Headers		RBM-HY1043E	VRF 2 - Pipe 4 - way header
RBM-HY2043E	VRF 2 - Pipe 4 - way header			SMMS - u Capacities 14,2 - 25,2HP	180
	RBM-HY1083E		VRF 2 - Pipe 8 - way header	SMMS - u Capacities below 14,2 HP	320
	RBM-HY2083E		VRF 2 - Pipe 8 - way header	SMMS - u Capacities 14,2 - 25,2HP	350
	RBM-HY1043FE		VRF 3 - Pipe 4 - way header	SHRM - e Capacities below 14,2 HP	250
	RBM-HY2043FE		VRF 3 - Pipe 4 - way header	SHRM - e Capacities 14,2 - 25,2HP	380
	RBM-HY1083FE		VRF 3 - Pipe 8 - way header	SHRM - e Capacities below 14,2 HP	410
	RBM-HY2083FE		VRF 3 - Pipe 8 - way header	SHRM - e Capacities 14,2 - 25,2HP	420

Accessories – Piping Kits

				Value (€)	
Flow Selectors		RBM-Y1124FE	VRF Single Flow selector Unit	SHRM - e Capacities below 11,2kW	1.290
		RBM-Y1804FE	VRF Single Flow selector Unit	SHRM - e Capacities 11,2 – 18,0kW	1.400
		RBM-Y2804FE	VRF Single Flow selector Unit	SHRM - e Capacities 18,0 – 28,0kW10	2.270
		RBM-Y1801F4PE	VRF Multi Flow selector 4 - branch	SHRM - e	3.600
		RBM-Y1801F6PE	VRF Multi Flow selector 6 - branch	SHRM - e	5.400
		PMV kit		RBM-PMV0361U-E	VRF PMV kit3
RBM-PMV0901U-E	VRF PMV kit3			Mini SMMS - e / SMMS - u	330


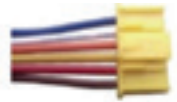

Wireless & Wired Remote Controllers

				Value (€)	
Wireless & Wired Remote Controllers		RBC-AMSU51-EN	Remote Controller	Includes energy monitoring, timer and backlight display as well as power save functions	160
		RBC-ASCU11-E	Compact remote controller 86 x 86	Includes timer off, backlight display with easy use functions	90
		RBC-AXU31U-E	4 - way cassette corner + wireless controller	Wireless receiver kit for 4 - way cassette	240
		RBC-AXU31C-E	Ceiling receiver + remote controller	Wireless Remote Controller kit for Ceiling & 1 - way cassette	260
		RBC-AXU31UM-E	4 - way compact cassette corner + remote controller	Wireless Remote Controller kit for compact cassette.	160
		RBC-AXU31-E	Wireless remote controller.	Independent receiver and remote controller for all models (e x cludes High static Duct).	370
		NRC-01HE	A2A Heat Exchanger Remote Controller	Controller dedicated to A2A heat exchangers to select and set the rate of incoming fresh air.	140
		RBC-AX41U(W)-E	SMART 4 - way cassette corner + wireless controller	Wireless receiver kit for SMART 4 - way cassette	260

Central Controllers & BMS Interfaces

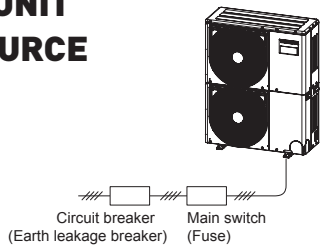
				Value (€)	
Central Controllers & BMS Interfaces		TCB-SC640U-E	Central Controller ON - OFF	Full control of max. 64 indoor units.	960
		BMS-SM1281ETLE	Smart Manager with data analyzer	Full control of up to 128 IDUs with energy monitoring & advanced control options	2.600
		BMS-CT2560U-E	Touch Screen Controller	Full control of up to 256 IDUs with electric billing.	4.800
		BMS-CT5121E	Touch Screen Controller	Full control of up to 512 IDUs with electric billing.	6.300
		BMS-IWF0320E	Smart device control interface	Wifi control interface (up to 32 IDUs). Enables full control with Toshiba AC application.	1.920
		BMS-IFB640TLE	BACnet control	BACnet Interface for LC and VRF, up to 64 IDUs.	1.980
		TCB-IFLN642TLE	Lonworks® Gateway	Lonworks Interface	1.680
		TCB-IFMB641TLE	Modbus interface	Modbus interface, up to 64 IDUs.	2.040
		BMS-IFLSV4E	TCS - Net Relay Interface	TCS - Net Relay Interface	1.020
		BMS-IFWH5E	Energy Monitoring Relay Interface	Energy Monitoring Relay Interface	800

Accessories

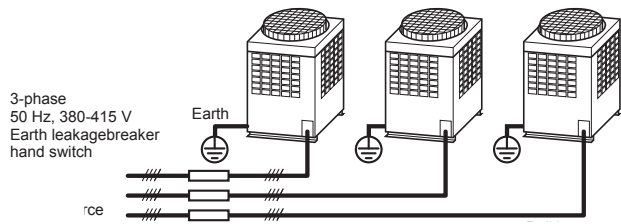
				Value (€)	
Accessories		TCB-IFCB5-PE	PC Board for window contact	Window Switch & On/Off Application Control Board	70
		TCB-KBCN61HAE	Connector for CN61 (50 pcs)	External ON/OFF, operation output, alarm output	450
		TCB-KBCN32VEE	Connector for CN32 (50 pcs)	Ventilation control from Remote Controller	220

Electrical wiring

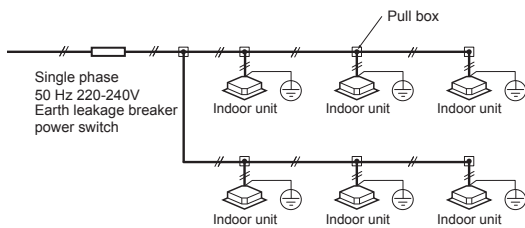
MINI SMMS-E OUTDOOR UNIT POWER SOURCE



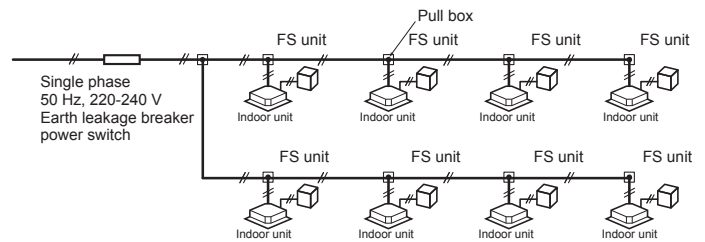
SMMS-U/ SMMS-E / SHRM-E OUTDOOR POWER SOURCE



INDOOR UNIT POWER SOURCE



INDOOR POWER SOURCE



FS unit only applicable for SHRM-e. Multiple and 4 series FS boxes need to be powered separately from indoor unit.

Electrical characteristics for VRF Outdoor Units

SMMS-u CDU (HP)	Maximum operating current (Amps)	Proposed power connection fuse (Amps)	Proposed wire size
8	17	20	5 x 4,0 mm ²
10	23	35	5 x 10,0 mm ²
12	27	35	5 x 10,0 mm ²
14	31	40	5 x 16,0 mm ²
16	34	40	5 x 16,0 mm ²
18	38	50	5 x 16,0 mm ²
20	40	50	5 x 16,0 mm ²
22	57	63	3 x 25,0 mm ² + 2 x 16,0mm ²
24	60	80	3 x 35,0 mm ² + 2 x 16,0mm ²

SMMS-e CDU (HP) Stand Alone	Maximum operating current (Amps)	Proposed power connection fuse (Amps)	Proposed wire size
8	20,5	25	5 x 6,0 mm ²
10	21,5	25	5 x 6,0 mm ²
12	26.1	35	5 x 10,0 mm ²

* All wiring must comply with local and national electrical codes, regulations and must be installed by a licensed electrician.

Electrical characteristics for VRF Outdoor Units

SHRM-e CDU (HP)	Maximum operating current (Amps)	Proposed power connection fuse (Amps)	Proposed wire size
8	21,5	25,0	5 x 6,0 mm ²
10	26,1	35,0	5 x 10,0 mm ²
12	31,0	40,0	5 x 16,0 mm ²
14	35,8	50,0	5 x 16,0 mm ²
16	40,7	50,0	5 x 16,0 mm ²
18	44,9	50,0	5 x 16,0 mm ²
20	49,3	63,0	3 x 25,0 mm ² + 2 x 16,0mm ²

Mini SMMS-e CDU (HP)	Maximum operating current (Amps)	Proposed power connection fuse (Amps)	Proposed wire size
4 (1 fan)	26,5	35,0	3 x 10,0 mm ²
5 (1 fan)	28,0	35,0	3 x 10,0 mm ²
4 / 1ph	23,5	35,0	3 x 10,0 mm ²
5 / 1ph	26,5	35,0	3 x 10,0 mm ²
6 / 1ph	28,0	35,0	3 x 10,0 mm ²
4 / 3ph	12,5	16,0	5 x 2,5 mm ²
5 / 3ph	12,5	16,0	5 x 2,5 mm ²
6 / 3ph	12,5	16,0	5 x 2,5 mm ²
8	17,0	20,0	5 x 4,0 mm ²
10	20,0	25,0	5 x 6,0 mm ²

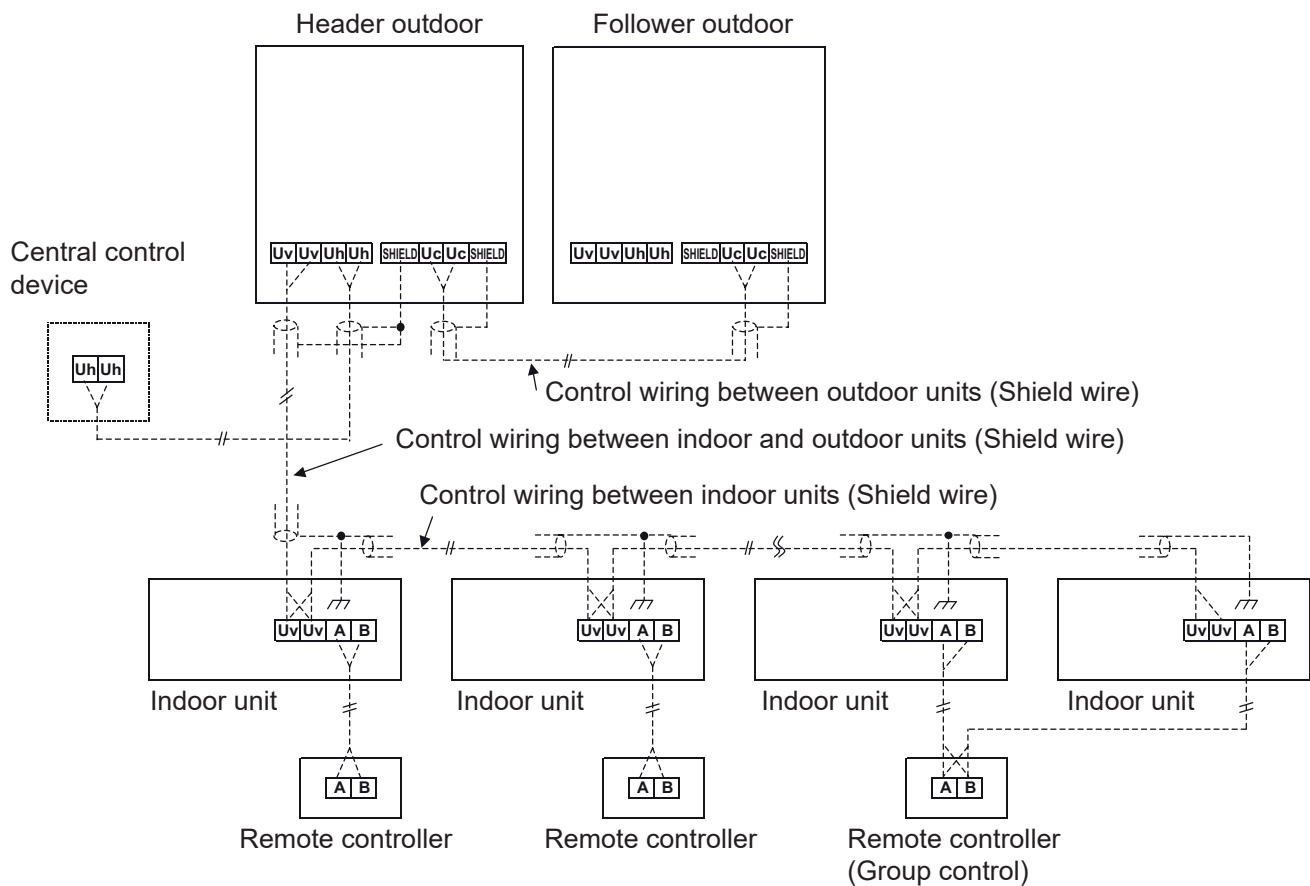
**Wiring Size for Indoor units,
must be independent from the outdoor unit power supply**

Model/Item	Power Supply	
	Wire Size	
All models of indoor units	2.0 mm ² (AWG#14) Max. 20 m	4.0 mm ² (AWG#12) Max. 50 m

* All wiring must comply with local and national electrical codes, regulations and must be installed by a licensed electrician.

Design of control wiring

Summary of control wiring



Communication wiring and central control wiring use 2-core non-polarity wires.
 Use 2-core shield wires to prevent noise trouble.
 In this case, ends of the communication wire must be grounded.
 Use 2-core non-polarity wire for remote control. (A, B terminals)
 Use 2-core non-polarity wire for wiring of group control. (A, B terminals)

Control wiring between indoor & outdoor units / between outdoor units

1,0mm² to 1,5mm² - up to 1.000m

Central control wiring:

1,0mm² to 1,5mm² up to 1.000m length / 2,0 mm² up to 2.000m length

Remote controller wiring:

0,5mm² to 2,0mm²

- Up to 500m length
- Up to 400m length in case of wireless remote controller in group control
- Up to 200m total length of control wiring between indoor units

* All wiring must comply with local and national electrical codes, regulations and must be installed by a licensed electrician.

Free branching system

- [1] Line branching system
- [2] Header branching system
- [3] Header branching system after line branching
- [4] Line branching system after header branching
- [5] Header branching system after header branching

The above five branching systems enable to dramatically increase the flexibility of refrigerant piping design.

